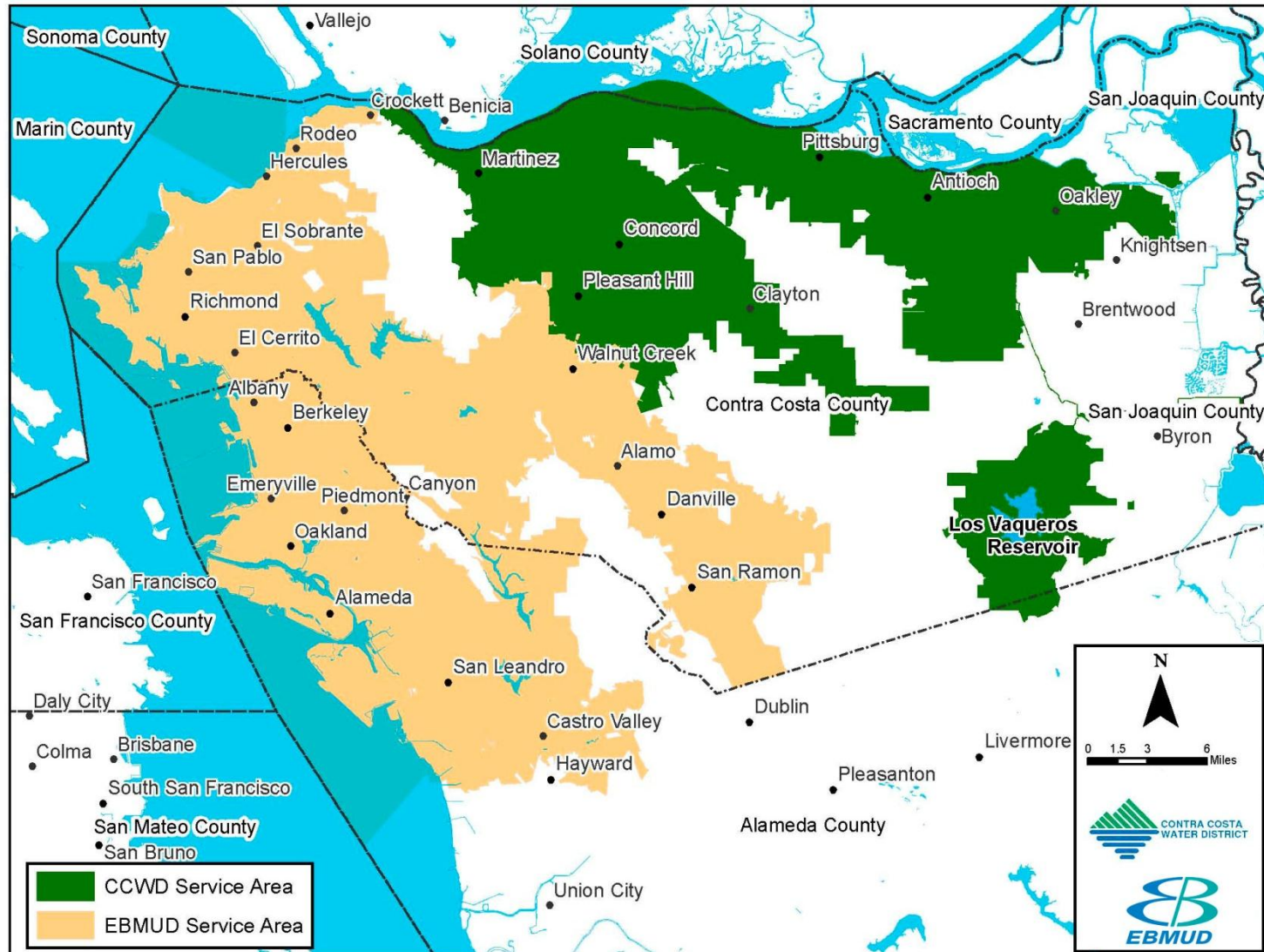


Local Water Supply Update

Get Ahead or Get Parched
Six Ways to Survive the Drought
June 25, 2014



EBMUD & CCWD Service Boundaries



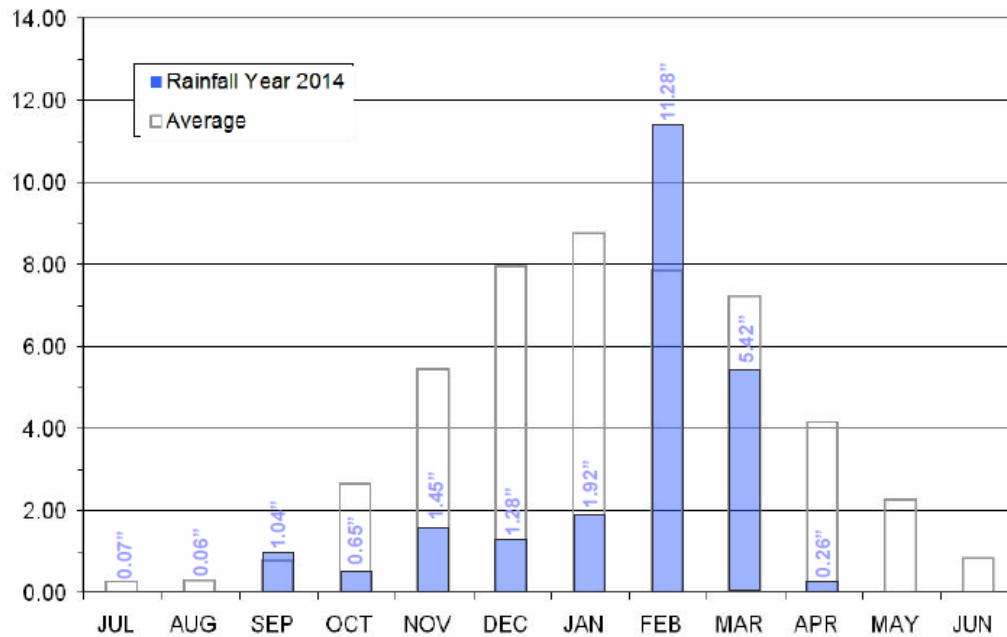
California Snow

January 2013 vs January 2014



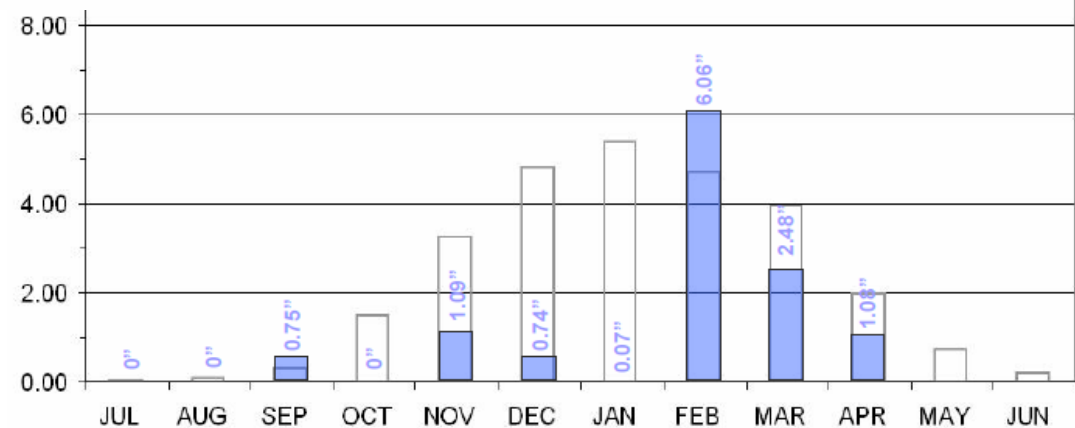
2013-14 Precipitation

Mokelumne 4-Station Average Precipitation (in)



East Bay Precipitation (in)

Year 2014



Water Year 2014 Review



- Rainfall Year 2014 is the 2nd driest year in the Mokelumne Watershed
- 1% of the precipitation accumulation season remains
- Received approx. 250,000 acre-feet of runoff to date [Normal = 750,000 AF]
- Projected end of September storage is 435,000-440,000 acre-feet [Avg. ~600,000 AF]



Meeting Dry Year Needs



CONSERVATION

10% VOLUNTARY
REDUCTION

water
SMART



SUPPLEMENTAL SUPPLY

RECYCLING



INTERTIES

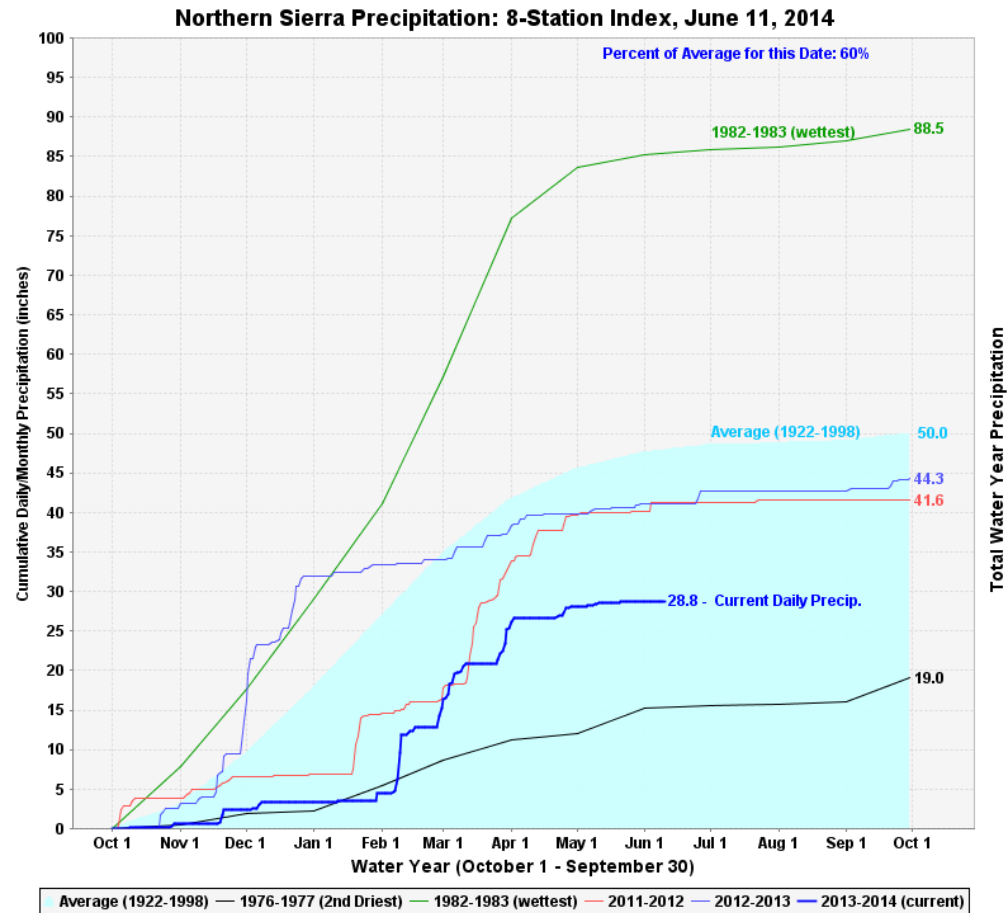
EBMUD Drought Outreach Goals



- Providing specific information to customer classes on how to save
- Offering free devices, technical assistance and rebates to help customers
- Commercial and residential landscape water budgets
- WaterSmart business certification outreach
- Single family home water report pilot expansion
- Thanking our routine conservers
- 2013 voluntary reductions will not be used in future allocations



CCWD Water Supply Outlook



CCWD Water Supply Outlook



- CCWD will receive 50% of its historical use from U.S. Bureau of Reclamation
- Additional water supplies from storage, water transfers and conservation
- Expanded Los Vaqueros stretches our water supply and provides water quality benefits
- Water conservation by customers provides water supply benefits

CCWD Drought Program



- **Voluntary** 15% reduction
- Historical use is on customer's water bill
- Recent conservation efforts **do not** count against you
- Focus on outside water use