

2016 Statewide Drought and Water Update



Statewide Update

some things stays the same

- SWRCB-State Water Board EO B-37-16
 - No hosing off sidewalks, driveways, etc.
 - No car washing without shut off nozzle
 - No lawn watering after measurable rain
 - No watering turf in street medians
 - No irrigation runoff
 - Water in restaurants by request
 - HOA prohibitions remain



HOA prohibitions remain in place

- AB 2100- set aside HOA rules that prohibit low water plants, conservation efforts, including reducing plant watering
- AB 2104-set aside HOA rules that prohibit turf conversion projects





Statewide Update changes

- Rollback overall 25% cuts (now local control)
- “Stress test” local suppliers must act now to ensure three year supply under drought conditions
- Based on local conditions
- Suppliers must self-certify that they can conserve if needed to meet demand
- **Reductions now based on projected shortfalls**

Contact local agency for support

- Education and Information
- Incentives
 - Rebates
 - Nozzles
 - Controllers
- Water audits and surveys
- Water budgeting help
- Demonstration gardens





State Rebates

- Toilets
 - \$100
 - HET 1.28 g or less

\$\$\$\$\$



Updates to the Model Water Efficient Landscape Ordinance MWELO

- 500 Square foot threshold
- 0.55 ETAF for residential
 - Allows for up to 25% turf or other high water use plants
- 0.45 ETAF for non-residential
 - No **ornamental** turf is realistic
 - Functional turf as an SLA-Special Landscape Area is allowed at 1.0 ETAF
 - Sports fields, parks
 - Event lawns at hotels

Local and regional MWELO

- Check with City or County for local regulations
- Orange County has a regional Ordinance adopted by MWDOC
- Cities may use that or a variation on the state MWELO
- Check with local planning department



Sustainability and the new Purpose of the Ordinance

- MWELO goes beyond water conservation
- Addressing water issues and other resource issues too
- Acknowledging California's climate (dry summer)
- Drought survival, protect the investment of landscapes

Landscape Design Plan

- Add compost (till in or leave on surface to protect tree roots)
- Friable (workable soil deep enough for plant growth)
- 3" mulch
- Show any rainwater capture features (if any)
- Show any gray water system components (if any)



Irrigation Plan

- Pressure regulation
- Master Valves and Flow Sensing
- Equipment must meet a national testing standard
- Sub-metering for better water management



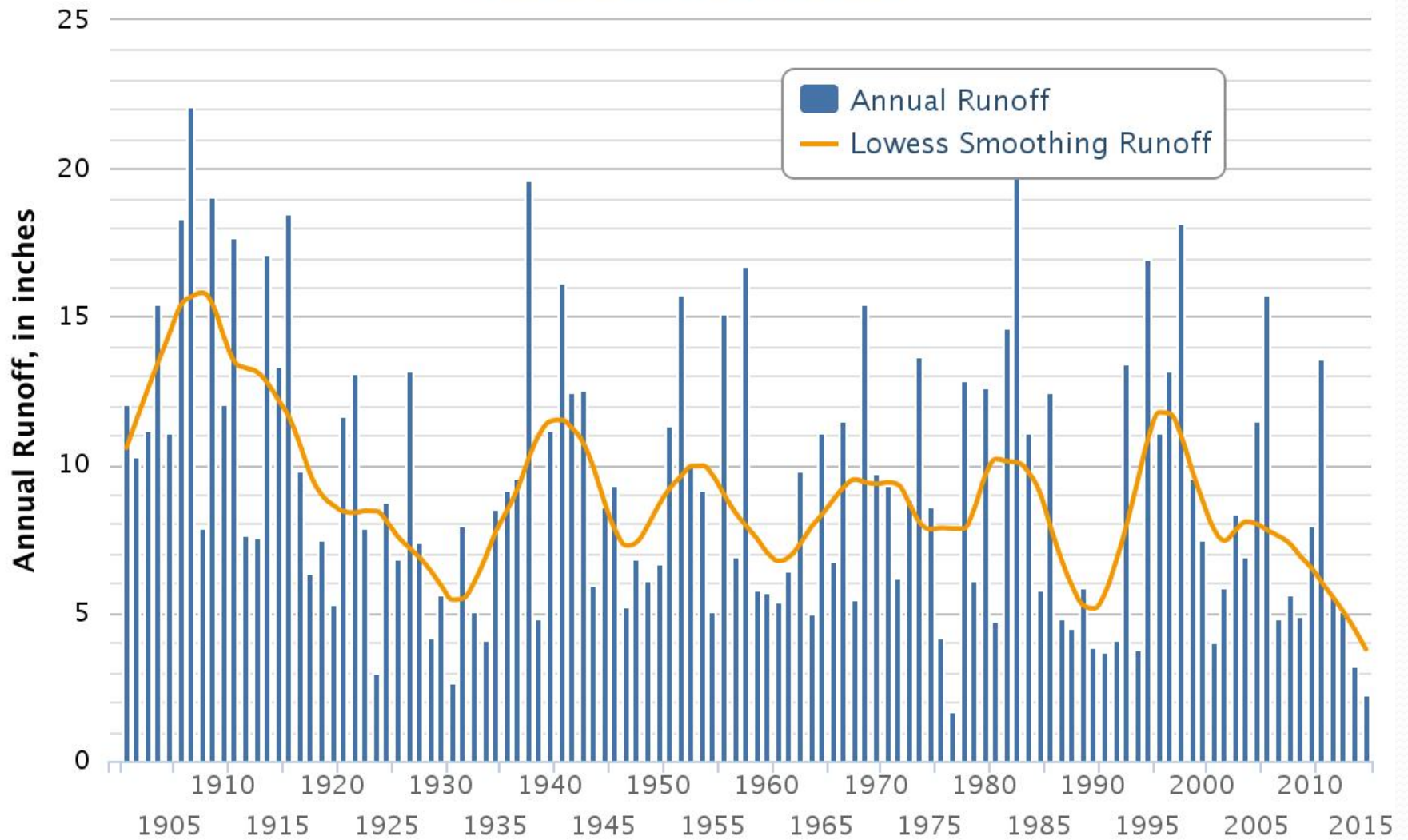
Graywater

- Ch. CA 16 plumbing code
- Laundry to Landscape –no permit if conditions are met
- Talk to local building dept. first
- Use care with soaps and detergents
- Not required in any landscape, but legal to install

Landscape Stakeholder Committee

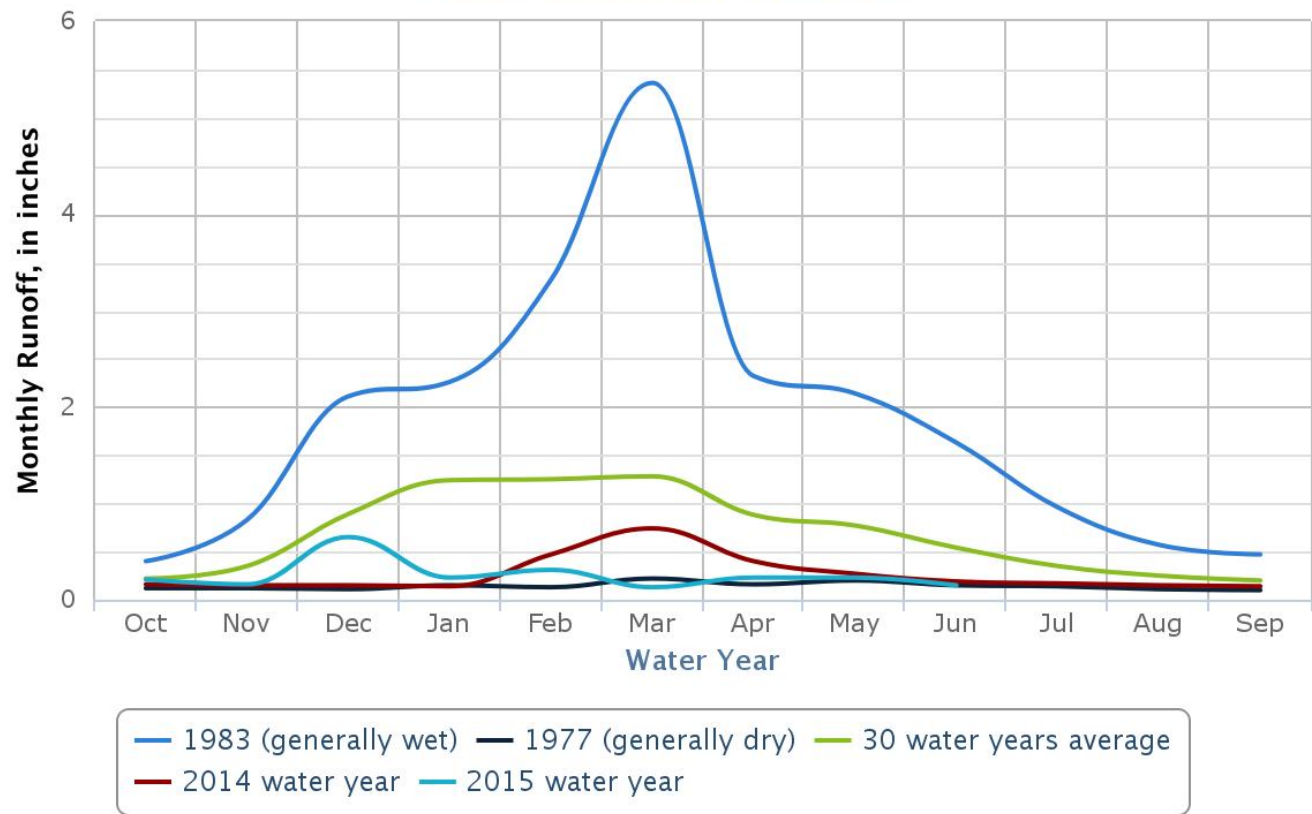
- DWR is working with expert volunteers in all aspects of landscape industry, and city/county government, water suppliers
- Focus is on 20+ topic areas in the MWELO
- Objective is to find solutions to make the MWELO more effective and **easier to comply with**
- Align timing with Cal Green Building code updates

Annual California Runoff





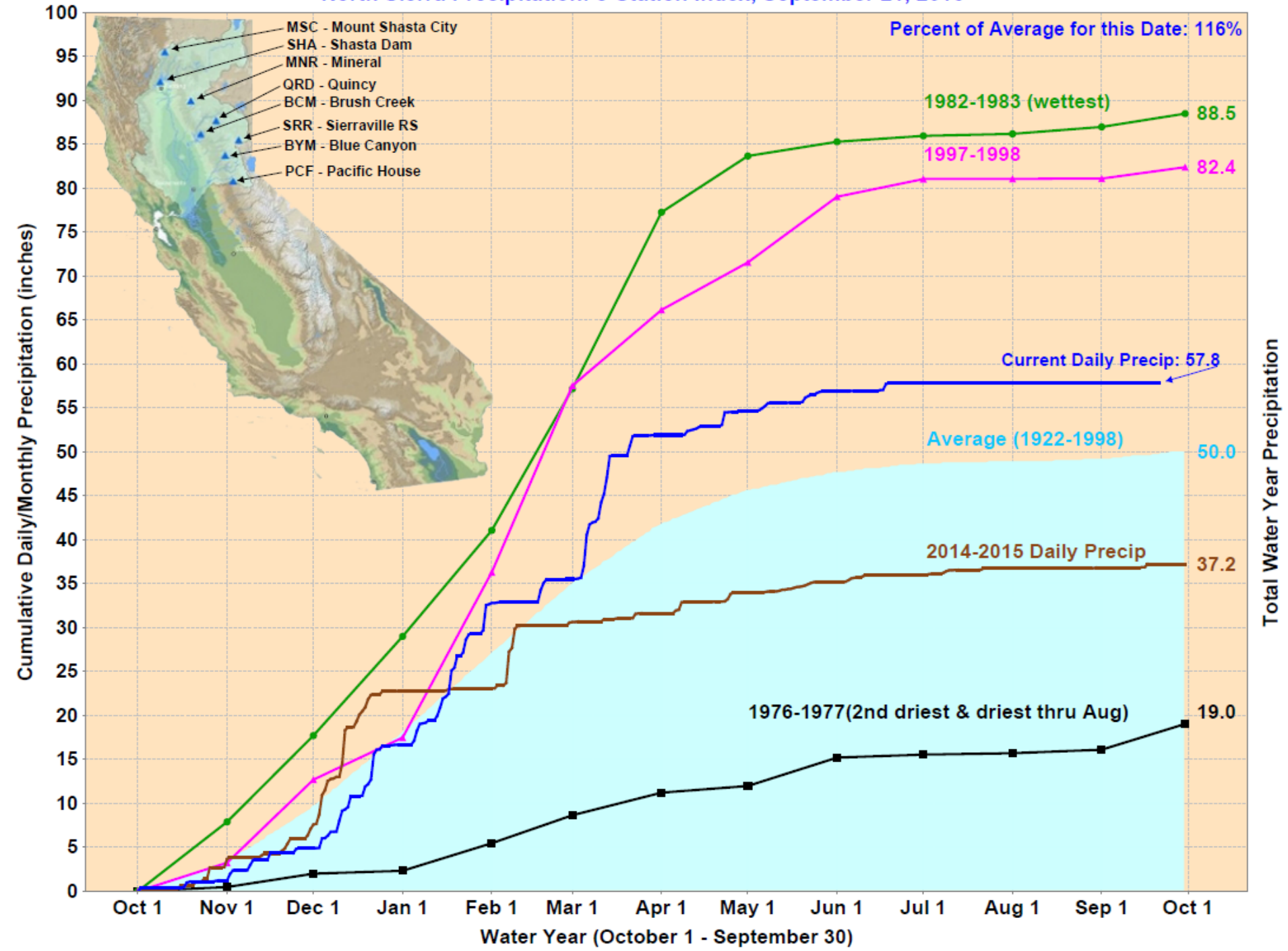
Monthly Runoff for California



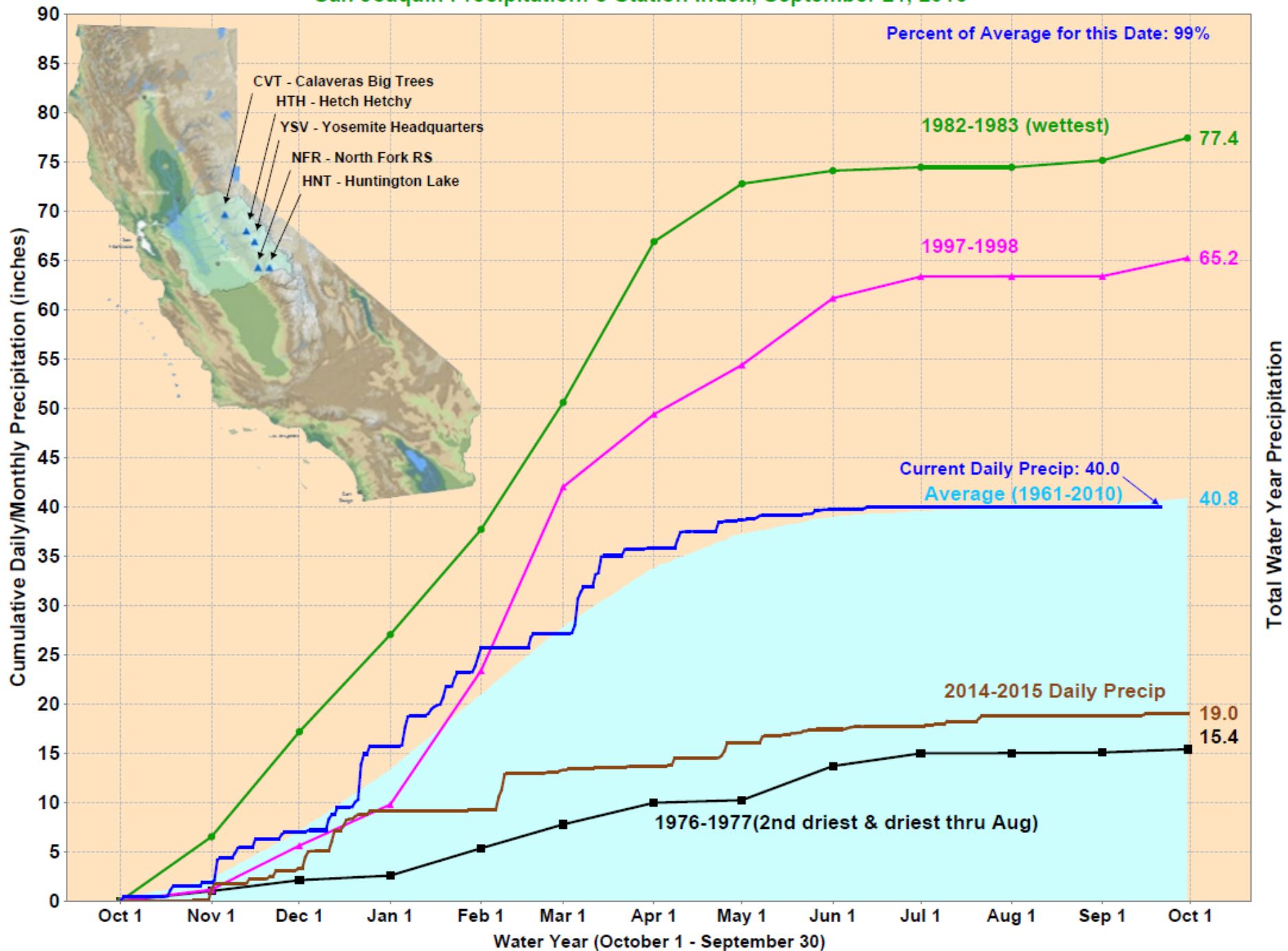
North Sierra Precipitation: 8-Station Index, September 21, 2016

Percent of Average for this Date: 116%

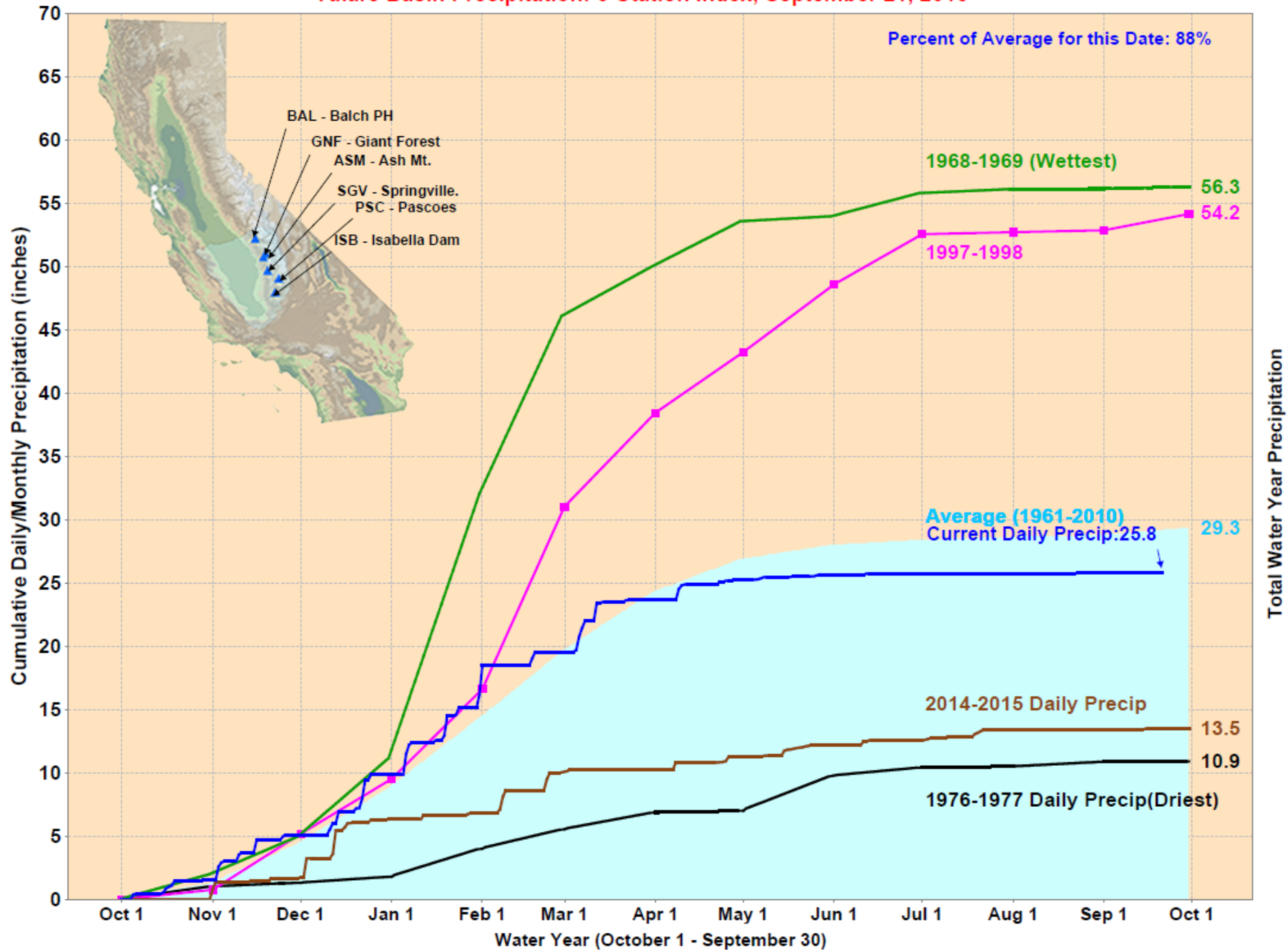
- MSC - Mount Shasta City
- SHA - Shasta Dam
- MNR - Mineral
- QRD - Quincy
- BCM - Brush Creek
- SRR - Sierraville RS
- BYM - Blue Canyon
- PCF - Pacific House



San Joaquin Precipitation: 5-Station Index, September 21, 2016



Tulare Basin Precipitation: 6-Station Index, September 21, 2016

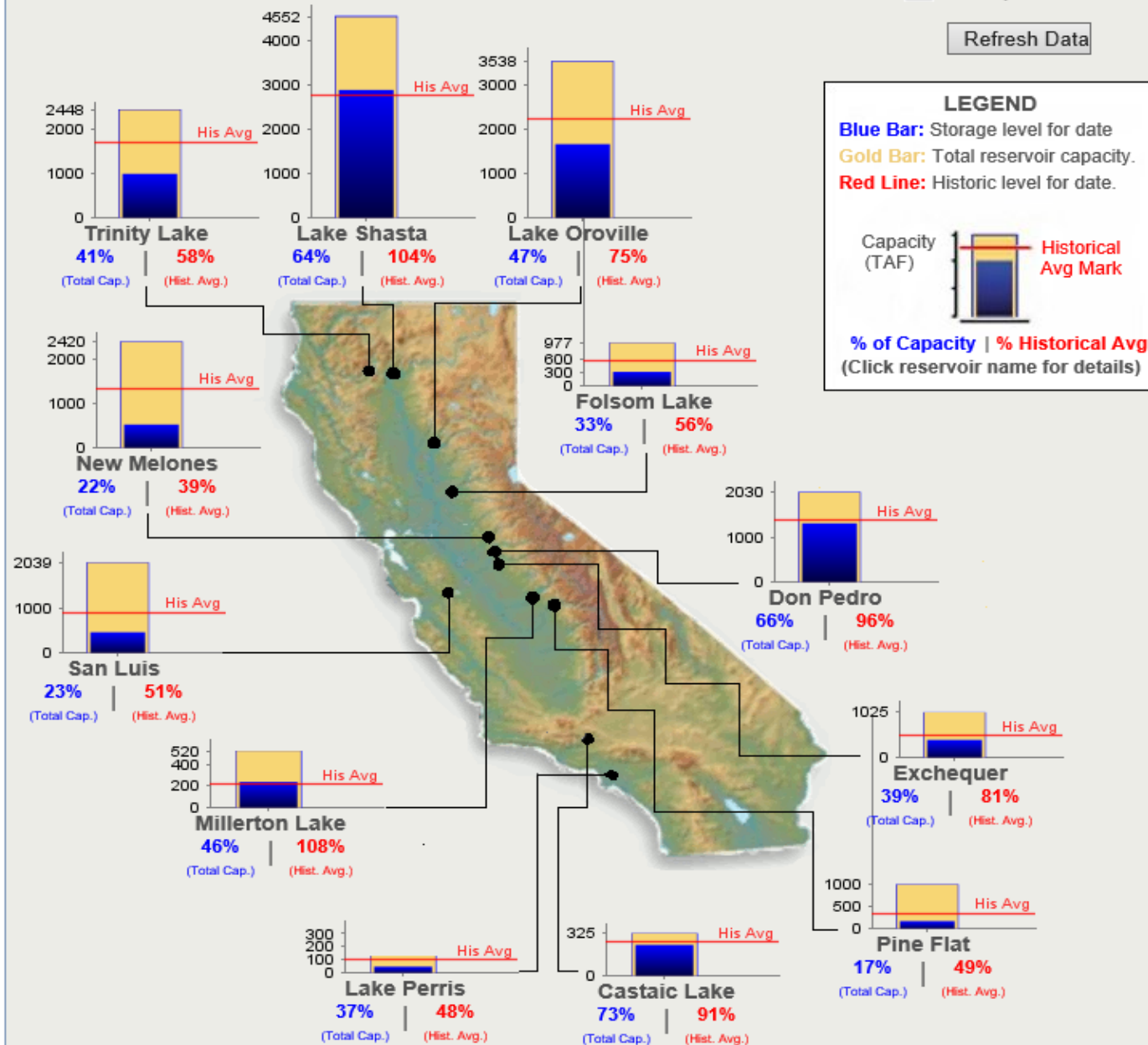


CONDITIONS FOR MAJOR RESERVOIRS: 20-SEP-2016

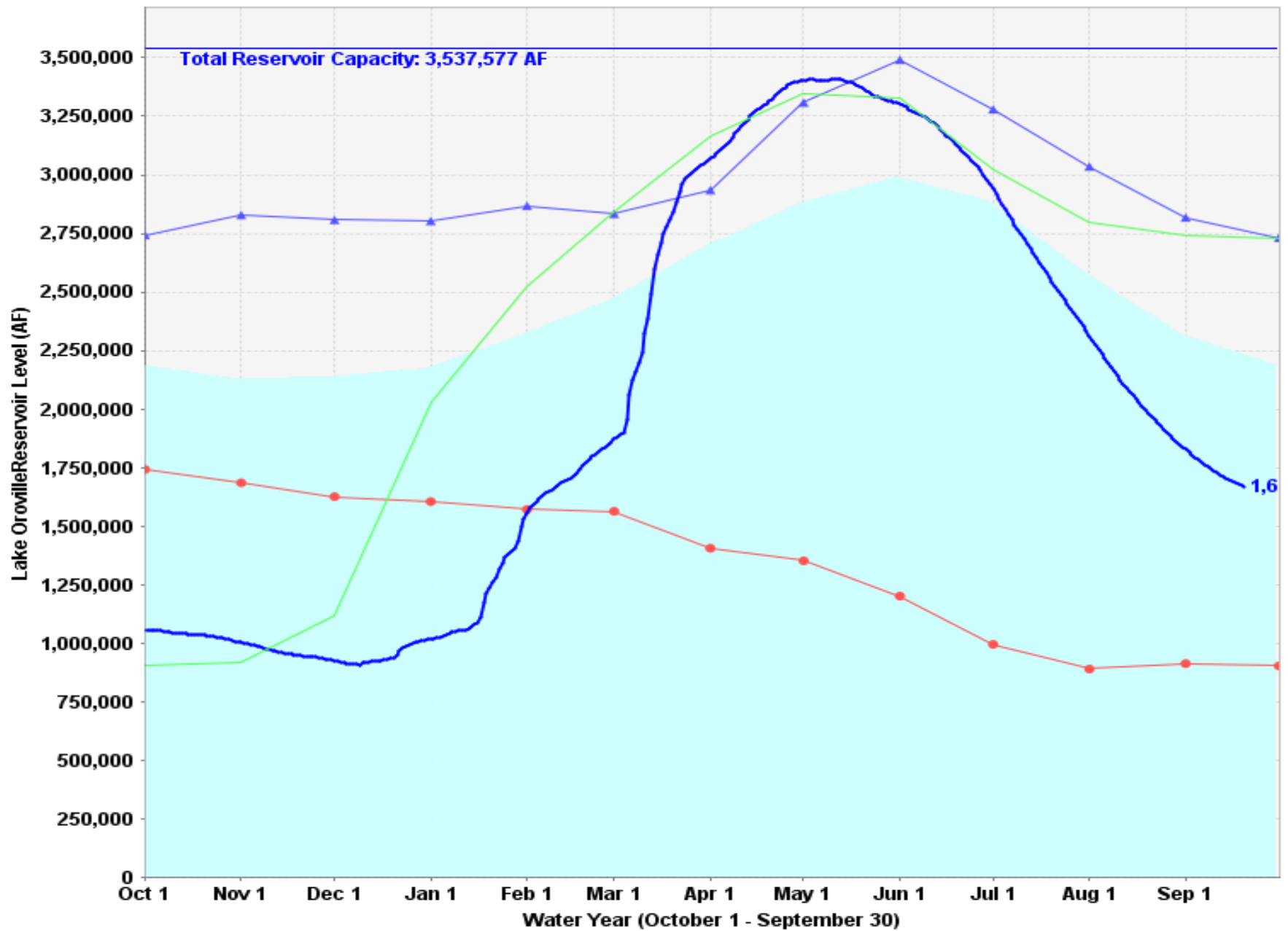
Data as of Midnight: 20-Sep-2016

Change Date: 20-Sep-2016

Refresh Data

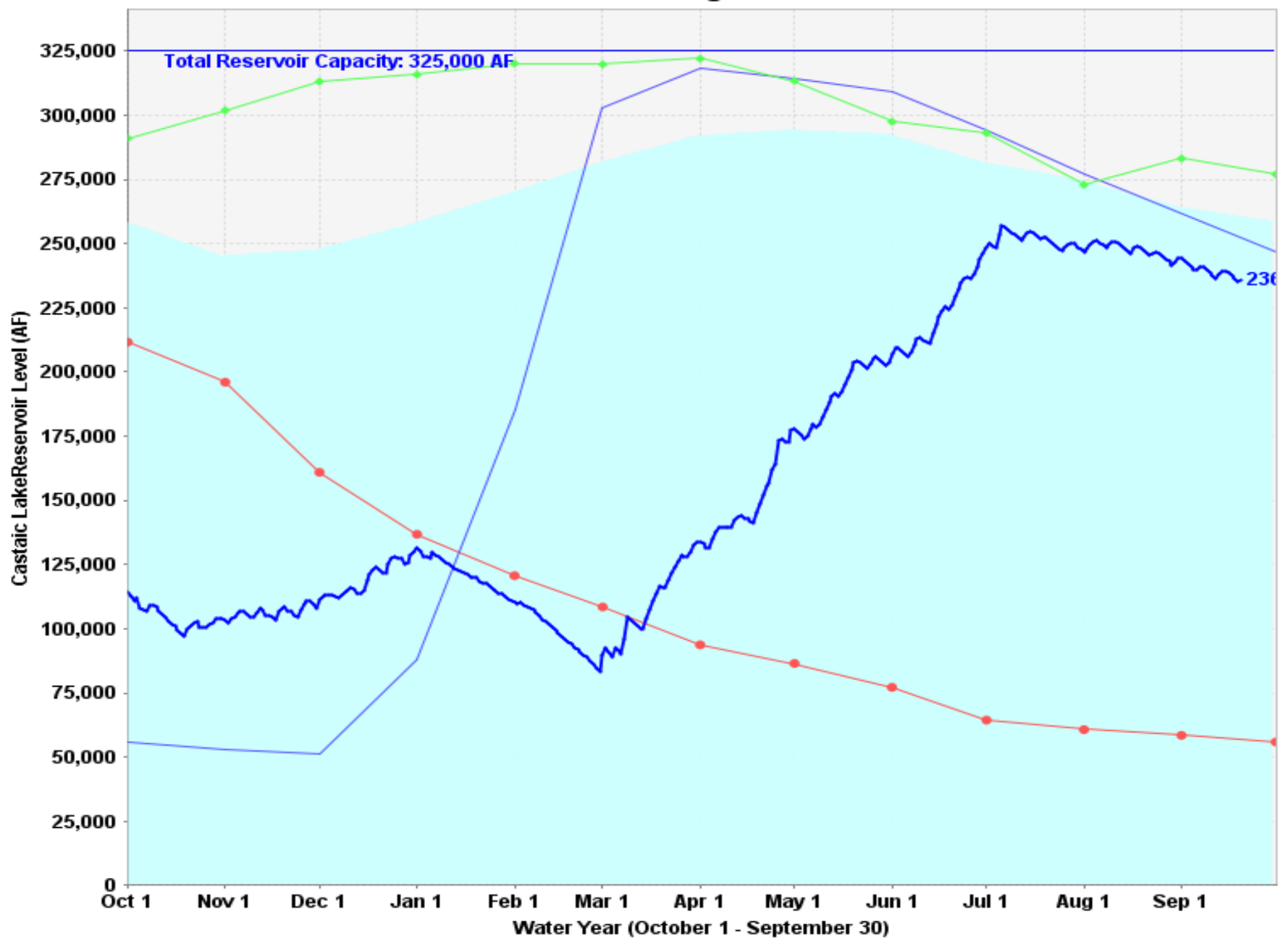


Lake Oroville Storage Levels



Historical Average — Total Reservoir Capacity — 1976-1977 (dry) — 1982-1983 (wet) — 2015-2016(current) — 1977-1978

Castaic Lake Storage Levels



Historical Average — Total Reservoir Capacity — 1976-1977 (dry) — 1977-1978 — 1982-1983 (wet) — 2015-2016(current)



Julie Saare-Edmonds

California Department of Water Resources
Landscape Program

julie.saare-edmonds@water.ca.gov

