

# Long Term Water Efficiency Regulations and Rebates



**Drip Workshop for Landscape  
Irrigation managers**

**June 16, 2016**

# Governor Executive Order

## May 9, 2016



- Aims to make water conservation a way of life in California
- Required actions include using water wisely, reducing water waste, improving efficiency
- Directs SWRCB to extend the urban emergency regulations through end of Jan. 2017
- Directs DWR to work with SWRCB to develop new permanent water use framework - by Jan. 10, 2017

# Governor Executive Order

## May 9, 2016



- Permanently requires monthly reporting on:
  - water usage
  - conservation achieved
  - enforcement efforts
- Directs urban and agricultural water suppliers to:
  - accelerate data collection
  - improve water system management
  - prioritize capital projects to reduce water waste
- California Energy Commission shall certify:
  - water loss detection and control technologies



# Section 29 Regulation Modifications: What's Required for All Customers



Potable Water Use Prohibitions	CA	Current Sec. 29	New Sec. 29
• Washing of sidewalks, driveways	✓	• Excessive use or runoff	✓
• Using a hose to wash vehicles without a shutoff nozzle	✓	• Excessive use or runoff; nozzle not mandated	✓
• Irrigation of ornamental turf in street medians	✓	• No restriction	✓
• Irrigating outdoor landscapes in a manner that causes runoff; or within 48 hours after measurable precipitation	✓	• Excessive use or runoff	✓
• Irrigation of landscapes of newly constructed homes, buildings inconsistent with state requirements	✓	NA	✓ Buttresses Section 31
• Non-recirculating fountains or decorative water features	✓	• Non-residential & new services	✓ All customers

# California landscape is evolving . . .



- From a traditional turf dominated landscape irrigated primarily with spray heads to a more sustainable landscape irrigated primarily with drip irrigation
- The momentum for change has accelerated since 2014



# Landscape irrigation is the single largest use of water in urban areas



- Improving landscape water use efficiency is increasingly important
- Drip is one of the tools used to stretch the water supply

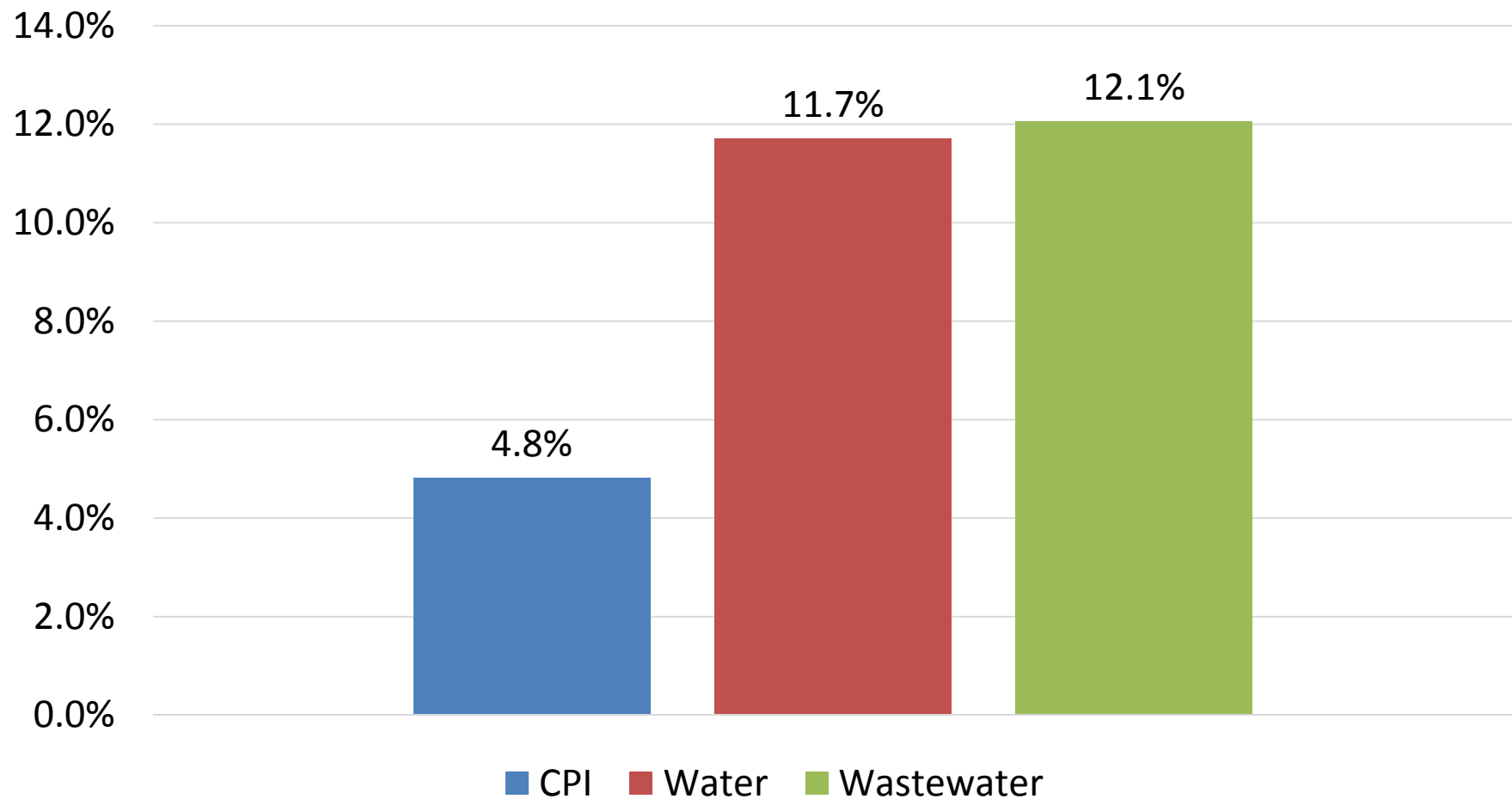




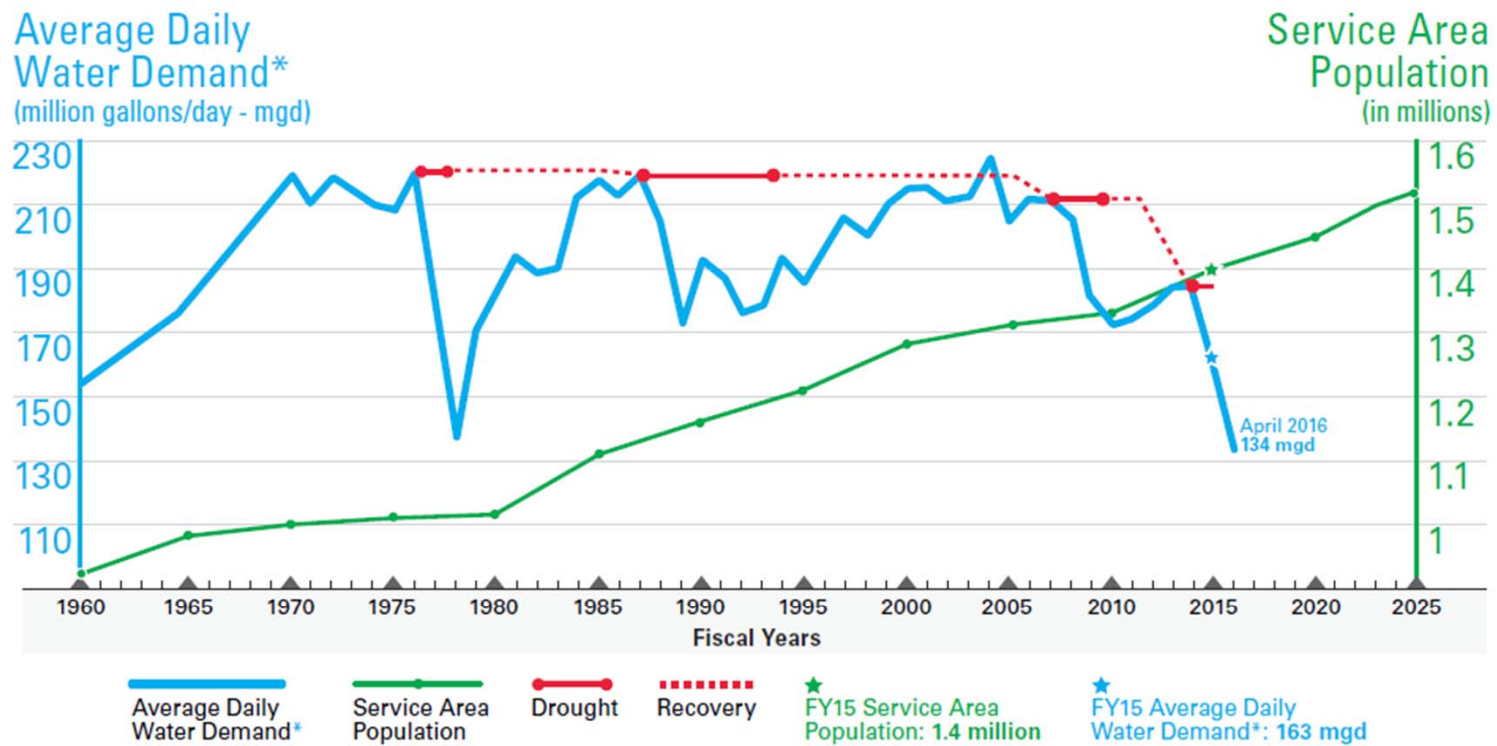
# Bi-annual Increases Over 26 Years



**2-year CPI and Rate Increase**



## Demand down, population up



Even more astounding, April 2016's Average Daily Water Demand (amount of water we produce based on customer need) dropped to 134 million gallons per day, the lowest April water production since 1978.

\*Demand measures the District's production of water based on customers' needs.



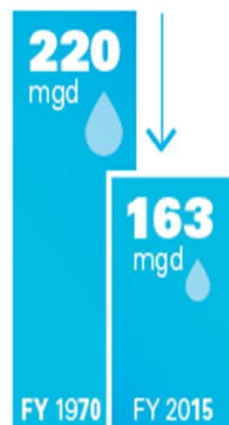
# 2015 Story



## Doing more with less

The East Bay: Less water demand, more people

EBMUD Average  
Daily Water Demand  
(million gallons/day - mgd)



EBMUD Service  
Area Population



## EBMUD customers reduced water use by 24%

How did we do it?

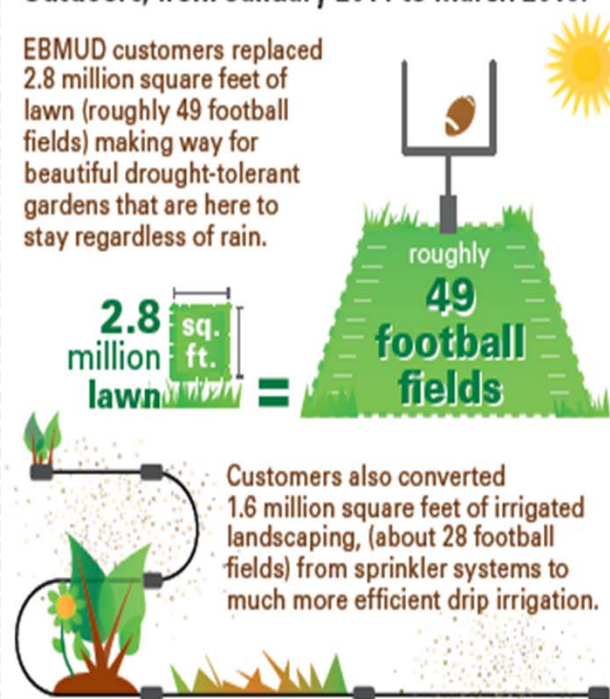
Indoors, from January 2014 to March 2016 we replaced:



## The lawn goodbye

Outdoors, from January 2014 to March 2016:

EBMUD customers replaced 2.8 million square feet of lawn (roughly 49 football fields) making way for beautiful drought-tolerant gardens that are here to stay regardless of rain.



# EBMUD provides rebates when you convert overhead to drip irrigation



M-WELO requires drip for most non-turf areas in new installations





# Bundled EBMUD Outdoor Rebates

Up to \$2,500 Residential and \$20,000 Commercial



- Lawn Conversion \$0.50/sq.ft.
- Convert overhead to drip \$0.25/sq.ft.
- Smart Irrigation Controllers \$75 to \$300
- High-Efficiency Nozzles \$2 nozzle  
\$3 per body
- Pressure Regulators \$75 to \$125
- Irrigation sub-meter \$75 to \$125



# Questions



**We all live downstream...  
somewhere...**

**Scott Sommerfeld  
Water Conservation  
Representative  
[ssommerf@ebmud.com](mailto:ssommerf@ebmud.com)  
(510) 287-0593**