

GET AHEAD OR GET PARCHED:

SIX WAYS TO SURVIVE THE DROUGHT

Riverside Drought Workshop

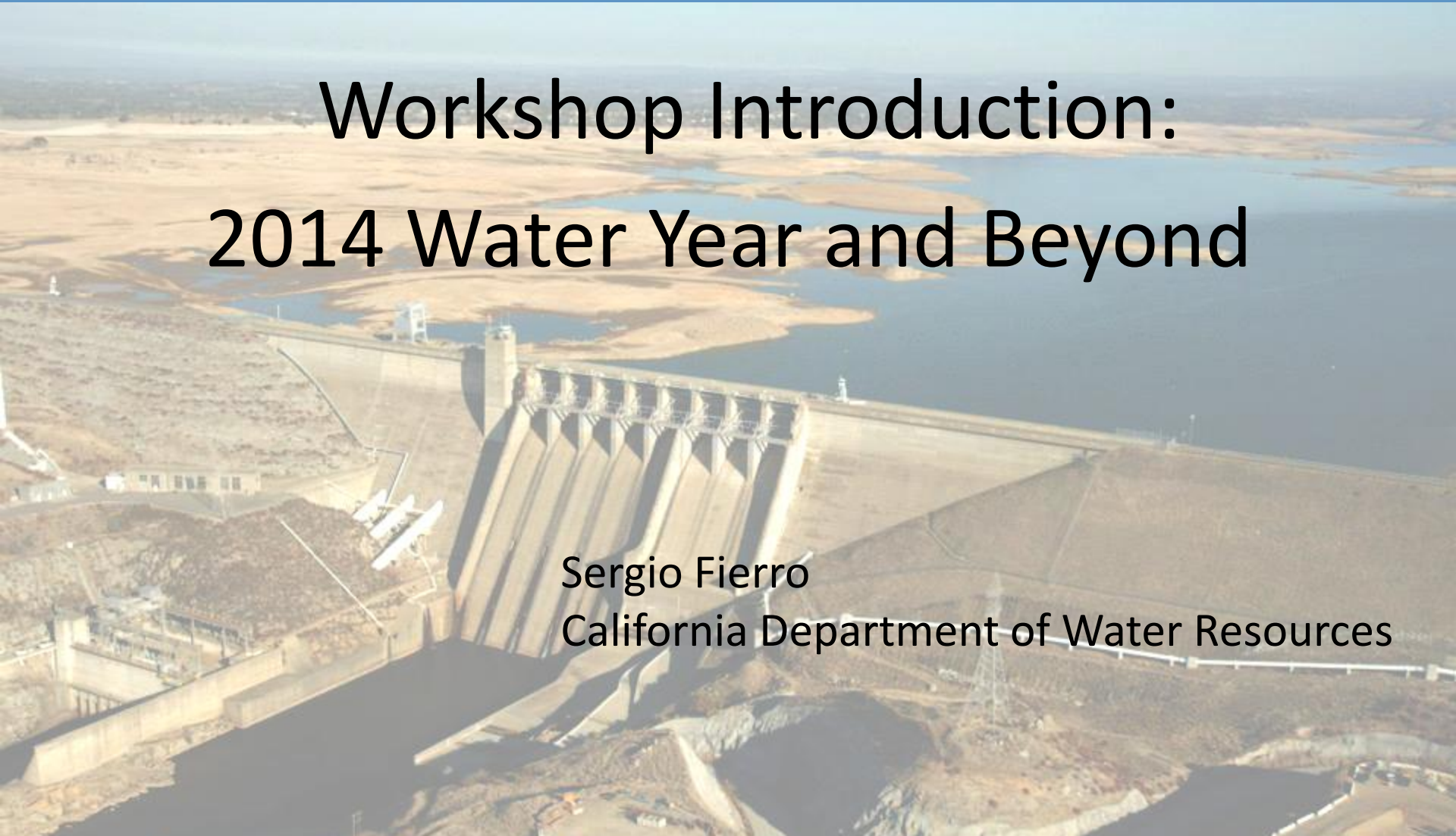
Riverside, CA

July 15, 2014

Workshop Introduction: 2014 Water Year and Beyond

Sergio Fierro

California Department of Water Resources

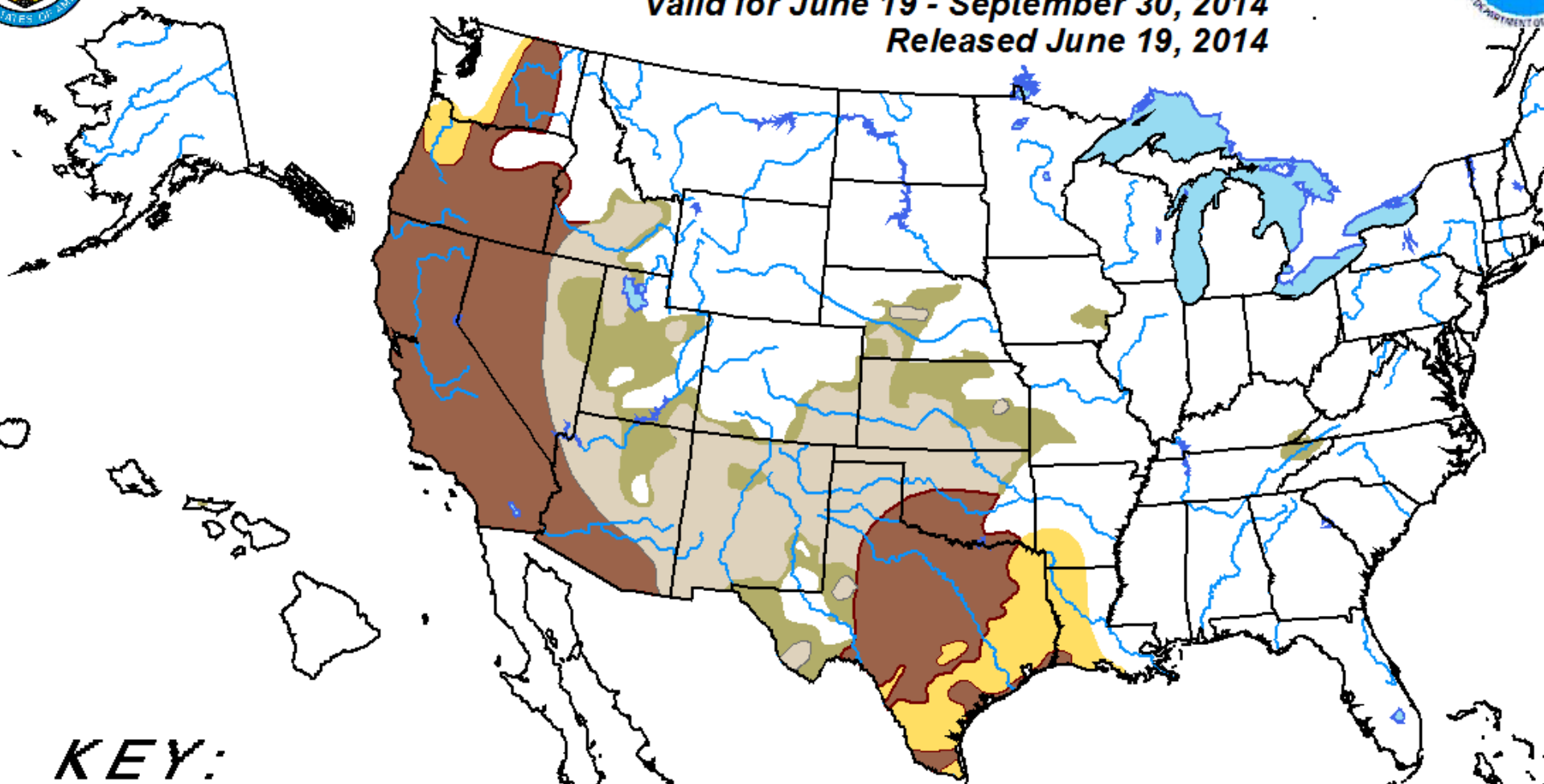





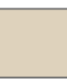

Drought Tendency During the Valid Period

Valid for June 19 - September 30, 2014

Released June 19, 2014



KEY:

-  Drought persists or intensifies
-  Drought remains but improves
-  Drought removal likely
-  Drought development

Author: David Miskus, Climate Prediction Center, NOAA

http://www.cpc.ncep.noaa.gov/products/expert_assessment/season_drought.html

Depicts large-scale trends based on subjectively derived probabilities guided by short- and long-range statistical and dynamical forecasts. Short-term events -- such as individual storms -- cannot be accurately forecast more than a few days in advance. Use caution for applications -- such as crops -- that can be affected by such events. "Ongoing" drought areas are approximated from the Drought Monitor (D1 to D4 intensity).

For weekly drought updates, see the latest U.S. Drought Monitor.

NOTE: The tan area areas imply at least a 1-category improvement in the Drought Monitor

U.S. Drought Monitor California

July 8, 2014

(Released Thursday, Jul. 10, 2014)

Valid 8 a.m. EDT

Drought Conditions (Percent Area)

	None	D0-D4	D1-D4	D2-D4	D3-D4	D4
Current	0.00	100.00	100.00	100.00	78.97	36.46
Last Week 7/1/2014	0.00	100.00	100.00	100.00	78.97	36.46
3 Months Ago 4/5/2014	0.00	100.00	99.81	95.21	68.76	23.49
Start of Calendar Year 12/31/2013	2.61	97.39	94.25	87.53	27.59	0.00
Start of Water Year 10/1/2013	2.63	97.37	95.95	84.12	11.36	0.00
One Year Ago 7/9/2013	0.00	100.00	98.23	92.70	0.00	0.00

Intensity:

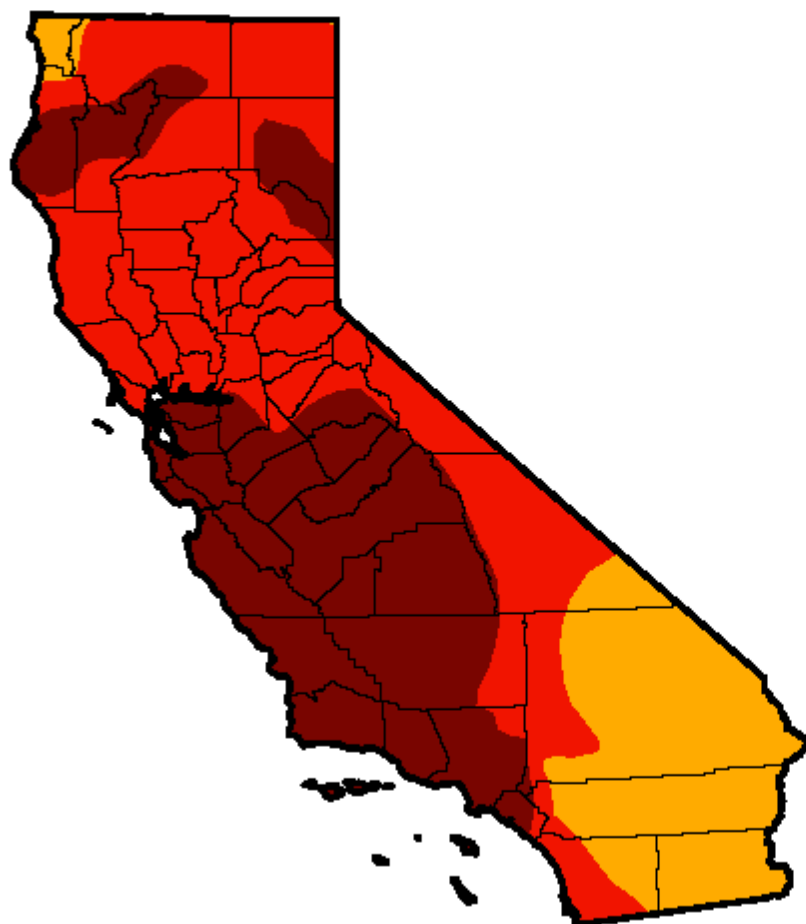
 D0 Abnormally Dry	 D3 Extreme Drought
 D1 Moderate Drought	 D4 Exceptional Drought
 D2 Severe Drought	

The Drought Monitor focuses on broad-scale conditions. Local conditions may vary. See accompanying text summary for forecast statements.

Author:

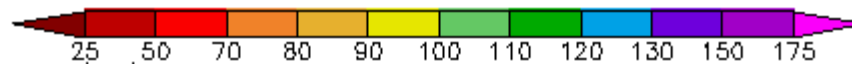
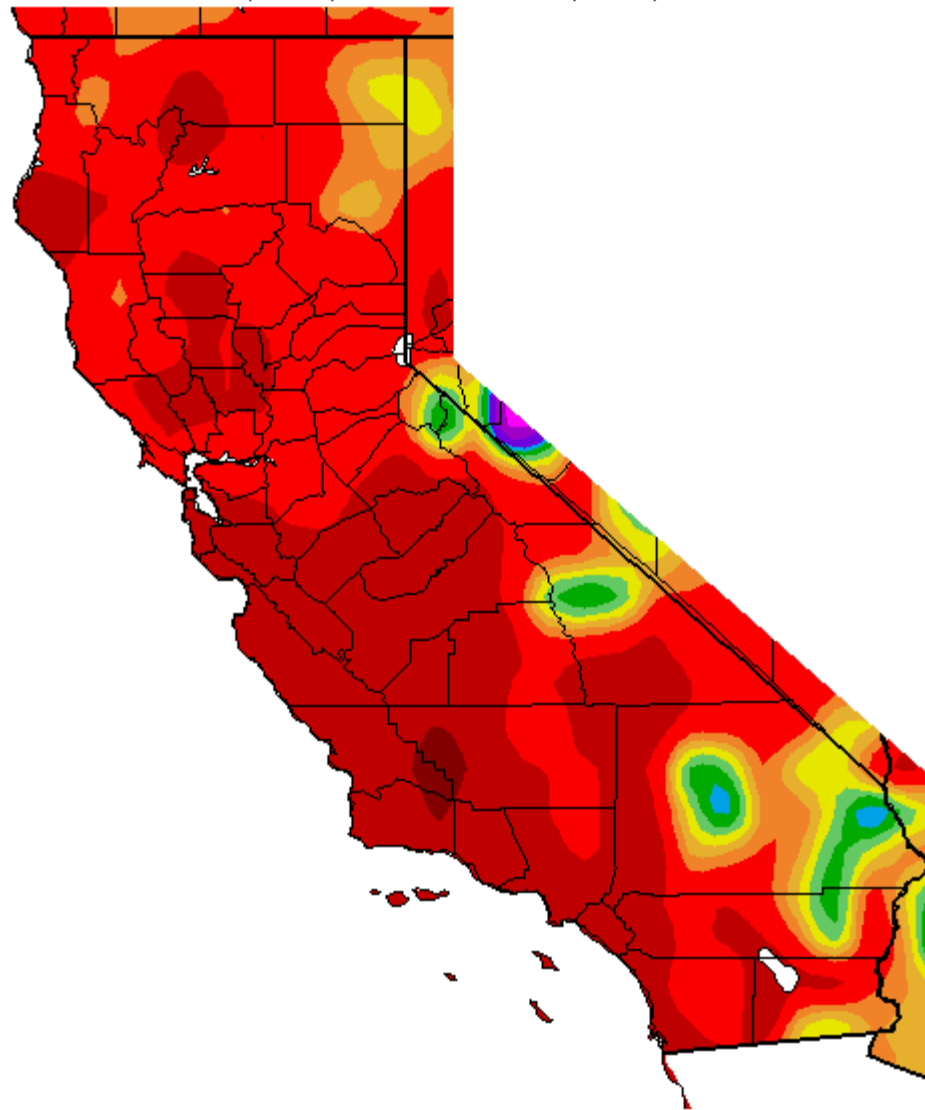
Anthony Artusa

NOAA/NWS/NCEP/CPC



<http://droughtmonitor.unl.edu/>

Percent of Average Precipitation (%)
7/14/2013 – 7/13/2014



Generated 7/14/2014 at WRCC using provisional data.
NOAA Regional Climate Centers



January 2014 Snow Survey Echo Summit

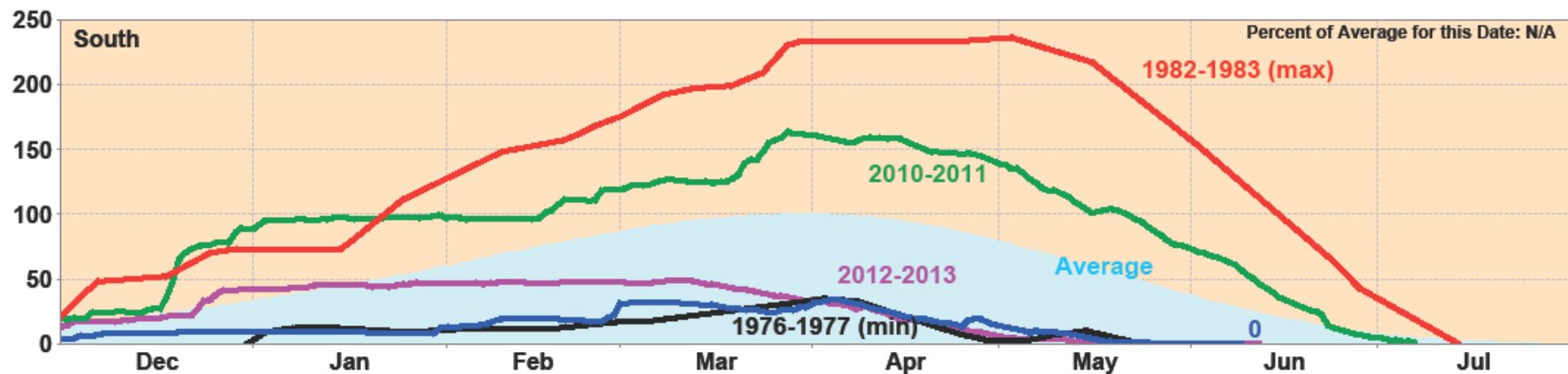
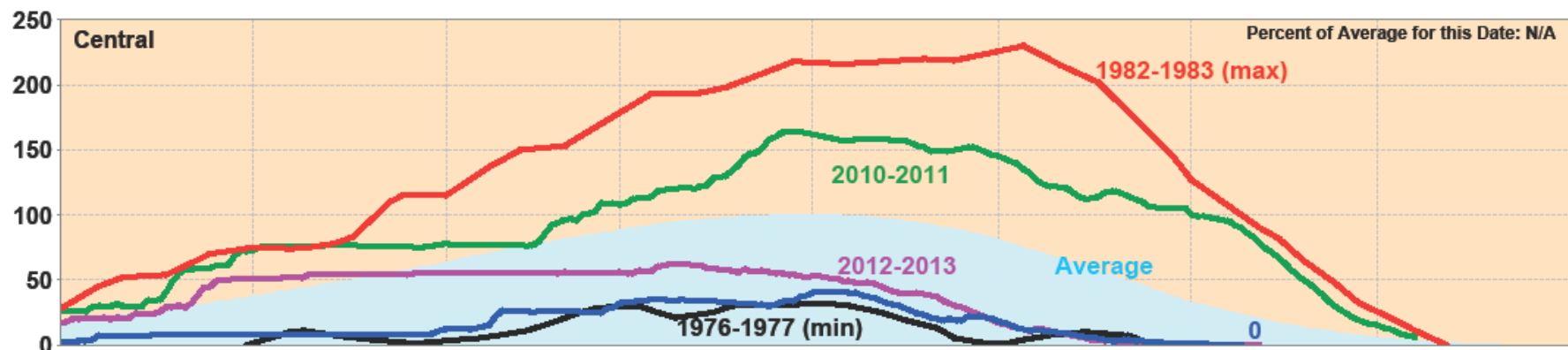
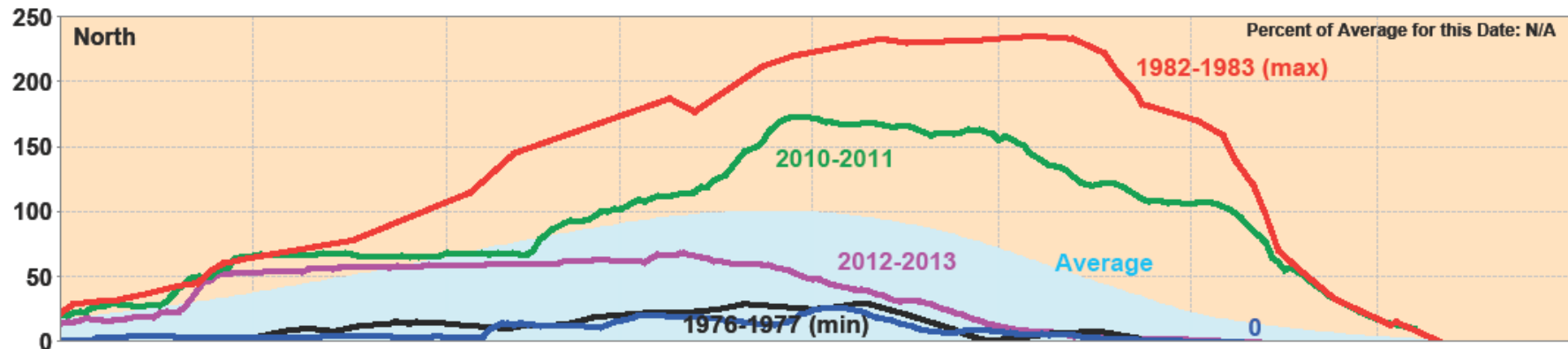


January 2013



January 2014

California Snow Water Content, June 9, 2014, Percent of April 1 Average



Statewide Percent of April 1: 0%

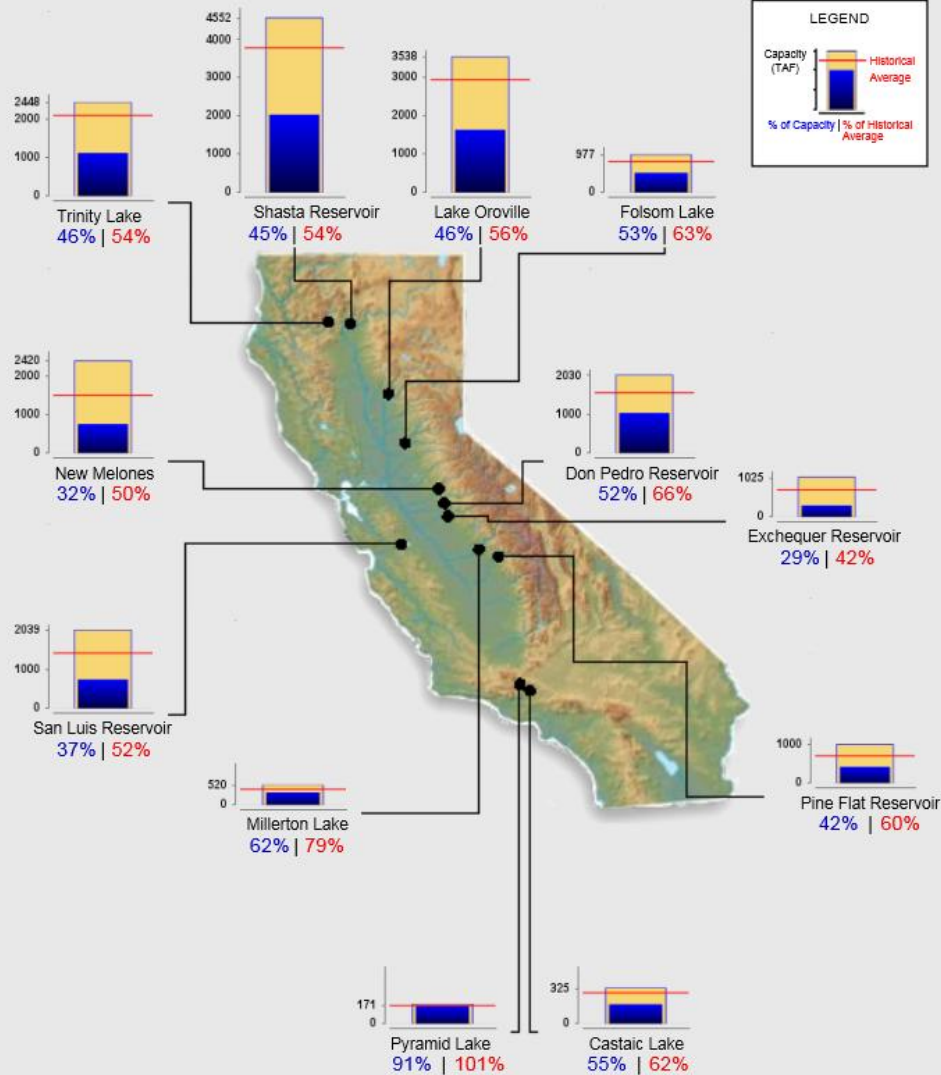
Statewide Percent of Average for Date: N/A



Reservoir Conditions

Ending At Midnight - June 15, 2014

CURRENT RESERVOIR CONDITIONS

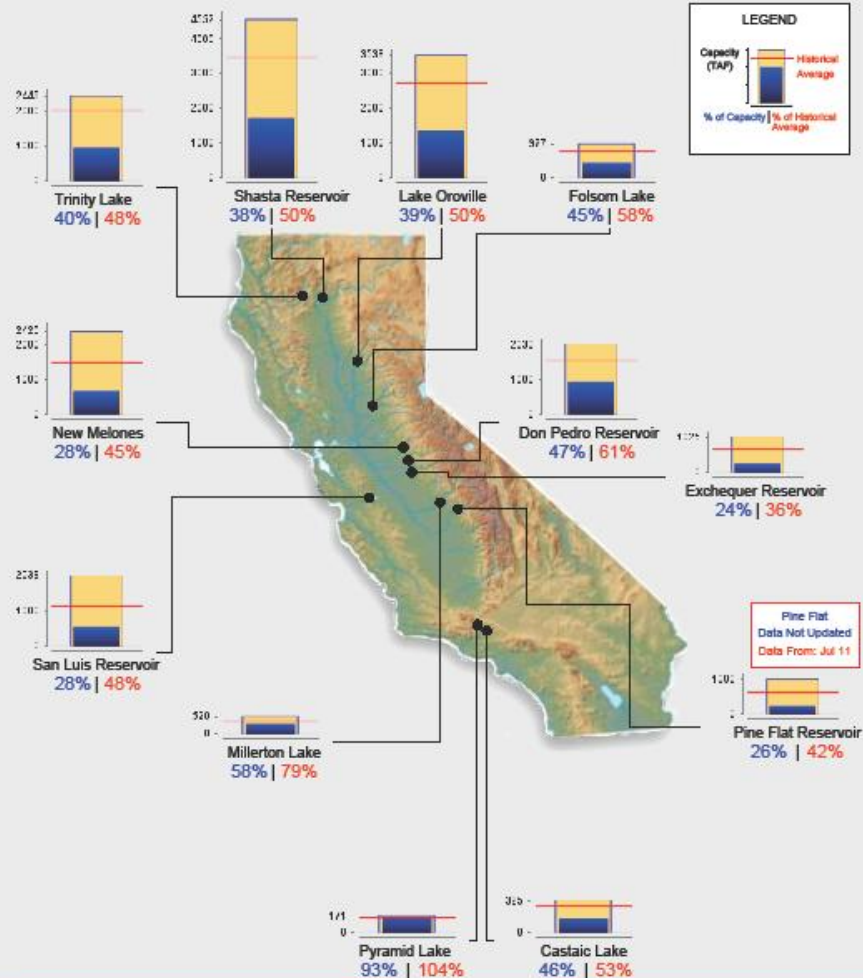




Reservoir Conditions

Ending At Midnight - July 13, 2014

CURRENT RESERVOIR CONDITIONS



Graph Updated 07/14/2014 04:45 PM



Landscapes are an important part
of California life.



Workshop Goal: To provide knowledge and tools to help each of you be efficient managers of water during this water short year.





Thank You

Refreshments courtesy of
TORO

Questions?

Contact Information:

Sergio.fierro@water.ca.gov

Julie.Saare-Edmonds@water.ca.gov
(916) 651 9676