

# **WaterSmart Resources for San Diego County**

**Get Ahead or Get Parched Workshop, Balboa Park**



**San Diego County  
Water Authority**

**Carlos Michelin  
Principal Water Resources Specialist**

**July 17, 2014**

# Overview

- 1. Be aware (programs & education)**
- 2. Comply (drought requirements)**
- 3. Get help (tech assistance)**
- 4. Take action (implement changes)**



# **1. Be Aware (Programs & Education)**

# WaterSmart Resources



[www.WaterSmartSD.org](http://www.WaterSmartSD.org)

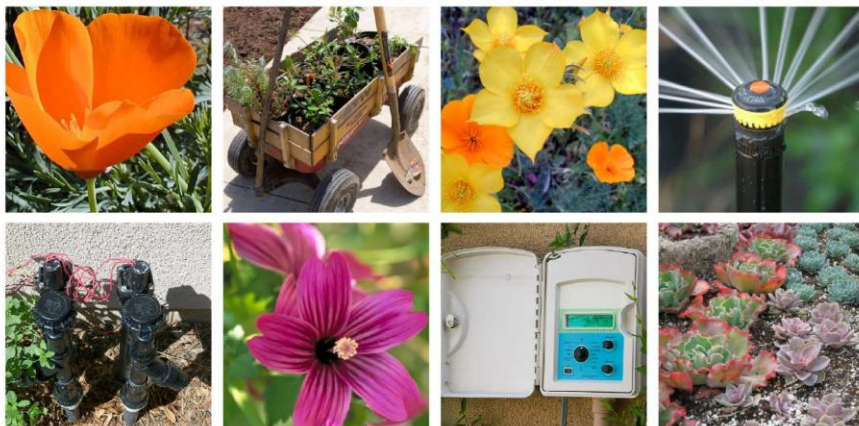


San Diego County  
Water Authority

# Classes and Workshops

PLEASE RSVP AT LEAST ONE WEEK PRIOR TO THE CLASS TO RESERVE YOUR PLACE

## BECOME A MORE WATERWISE GARDENER



- Using a Holistic Approach to Gardening
  - Building a Living Soil Sponge
- Rethinking Elements of Your Site
  - Right Plant, Right Place
- Using Rainwater as a Resource
  - Managing Irrigation

*This class is geared for residential customers and provided at no cost.*



THE METROPOLITAN WATER DISTRICT  
OF SOUTHERN CALIFORNIA

## LEARN 6 WAYS TO MAKE YOUR GARDEN CALIFORNIA FRIENDLY®



bewaterwise.com®

Want a  
Beautiful  
Water-saving  
Landscape?

**FREE**

## Landscape Makeover Workshop Series

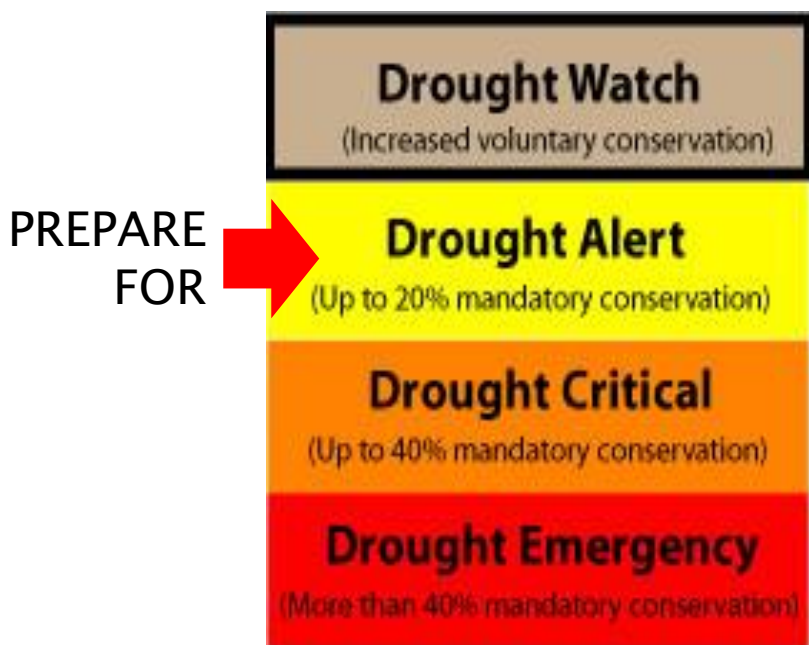
Now accepting applications  
Spring series begins **February 23, 2013**  
at the San Diego Botanic Garden



**VIEW MWD SLIDES**

## 2. Comply

# Comply with Drought Requirements



- ✓ Who is water provider to site?
- ✓ Identify local irrigation restrictions
- ✓ Work with your team to comply

# Sample DROUGHT ALERT Restrictions

## Based on Regional Model Ordinance

1. DROUGHT WATCH actions will be required

2. Adjust irrigation schedules:

- After 6 pm, before 10 am
- 3X per week (Jun. – Oct.)
- 1X per week (Nov. – May)



*Save every day, every way.*

3. Check for runoff – no runoff allowed [www.whenindrought.org](http://www.whenindrought.org)

4. Make sure hoses have shutoff valves

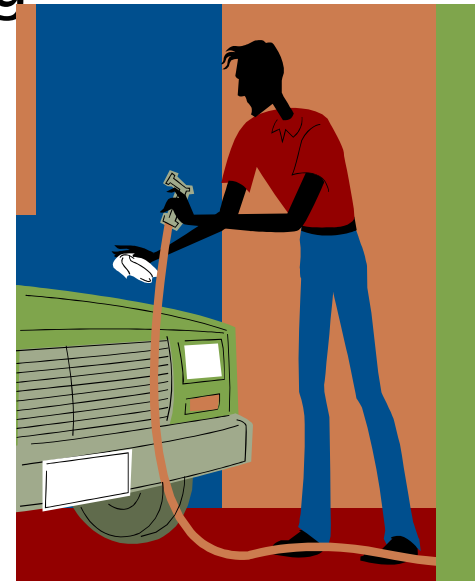
# Permanent Water Restrictions (City of San Diego):

- ▶ June through October: No irrigation after 10 am or before 6 pm
- ▶ November through May: No irrigation after 10 am or before 4 pm
  - On site testing of system is OK
- ▶ Water hose must have a self closing valve
- ▶ No spraying down pavement without a water efficient nozzle
- ▶ No Runoff



# Permanent Water Restrictions (City of San Diego):

- ▶ Restaurants must ask before serving water
- ▶ Hotels must provide customer the option of reusing the linens
- ▶ Fountains must be re-circulating
- ▶ Repair all leaks within 72 hours
- ▶ No overfilling of pools or spas



# Level One Water Restrictions

- ▶ Continuance of all Permanent Water Restrictions
- ▶ Voluntarily promote watering 3 days a week
- ▶ Voluntarily promote a maximum irrigation run time of 10 minutes (traditional spray head)
- ▶ City of San Diego Hotline 619 533-5271

**NO TIME TO WASTE**  
**NO WATER TO WASTE**



# Level One Water

- ▶ Increased promotion of the conservation ethic
- ▶ Awareness of our landscapes as the largest user of water
- ▶ Promotion of incentives to positively change the San Diego Lifestyle

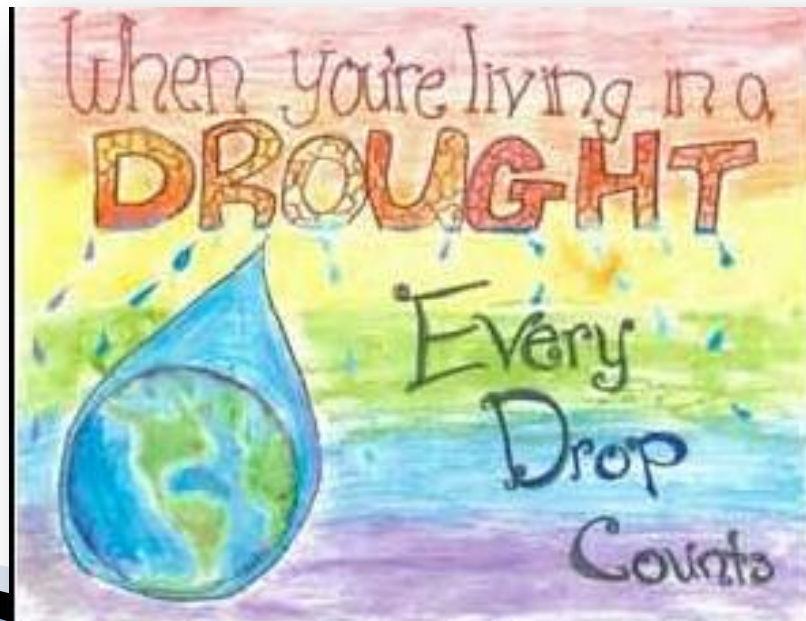


# Water Waste

## City of San Diego

Hotline 619 533-5271

Email: [Waterwaste@sandiego.gov](mailto:Waterwaste@sandiego.gov)



# Water Waste

## Future Level 2?

Hotline 619 533-5271

- ▶ Irrigate on three designated days of the week
  - (multi family = Mon/Wed/Fri)
  - Maximum of 10 mins. per day traditional spray
- ▶ Plus the Permanent Water Restrictions
- ▶ Variance required for non-conformance and must be approved



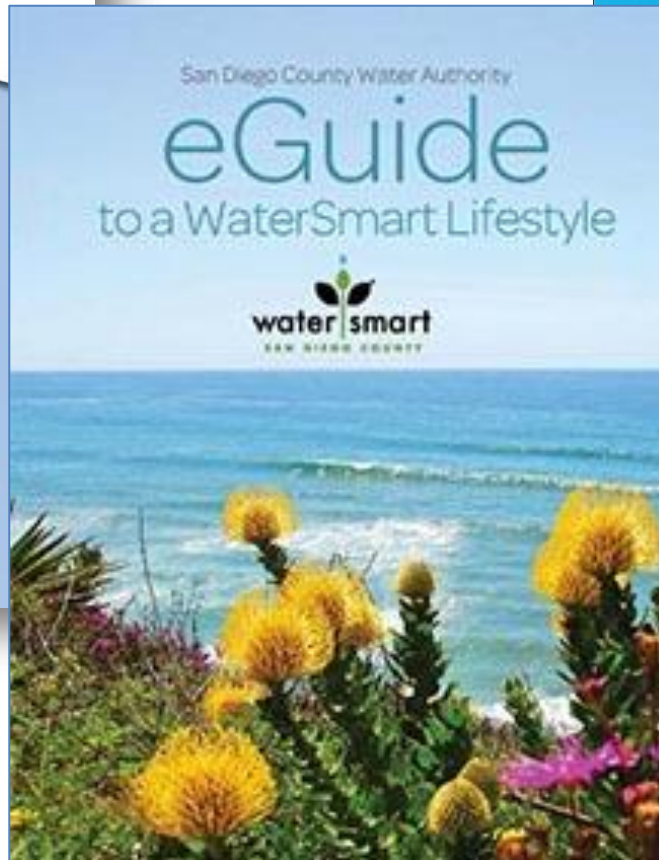
### 3. Get help

# "How To" Guides

## A Homeowner's Guide to a WaterSmart Landscape



## A BETTER WAY TO BEAUTIFUL





**FREE**

**Technical Assistance**

# WaterSmart Checkup



## Want to control irrigation costs?

### Get a checkup and find out how!

A WaterSmart Checkup is your free opportunity to receive site-specific water-saving recommendations. You'll benefit from the perspective of our certified irrigation professionals. And you decide if and when to implement the suggestions. There is no obligation.

We offer several different Checkup services and will match your property to the best available option. Participation is limited, so don't miss out. If you own or manage a commercial, multifamily,

- ✓ Free
- ✓ No obligation
- ✓ Prepare for seasonal irrigation changes

**Apply today.  
Participation is  
limited.**

**Find Out More  
and Apply**

Download

**[www.watersmartcheckup.org](http://www.watersmartcheckup.org)**

# Commercial Landscape Survey

CSD: 619 570-1999 CWA:

[www.watersmartcheckup.org](http://www.watersmartcheckup.org)

- ▶ Irrigation Meters (not required)
- ▶ Review Irrigation System – on site
- ▶ Review Water Use History
- ▶ Provide a Report Summarizing Irrigation Problems, Recommended Water Use and Schedules



## 4. Take action

# *Saving Water is Good for Your Business*



## PRODUCT TYPES ELIGIBLE FOR REBATES

- **Plumbing Equipment:**  
High-efficiency toilets, ultra-low and zero water urinals
- **Landscaping Equipment:**  
Irrigation controllers, large high-efficiency nozzles, pop-up rotating nozzles
- **HVAC Equipment:**  
Cooling tower conductivity and pH controllers
- **Food Services Equipment:**  
Connectionless food steamers, air-cooled ice machines
- **Medical and Dental Equipment:**  
Dry vacuum pumps, laminar flow restrictors

# *Save Water, Save Money*



***Rebates are available!***

Now you can save with the following water-efficient products:

- **High-efficiency clothes washers**
- **Rotating sprinkler nozzles**
- **Weather-based irrigation controllers**

**Follow these simple steps to participate in the SoCal Water\$mart program:**

- ① **Go online to initiate your application and determine the right qualifying product for your home:**  
[www.bewaterwise.com](http://www.bewaterwise.com)
- ② **Purchase a qualifying product**
- ③ **Complete the online rebate application and mail the required documentation within 60 days**

**socalwatersmart.com**



Time to replace

that turf with a

# Beautiful WaterSmart Landscape

## WaterSmart Turf Replacement Program

After turf replacement



Photos courtesy of  
Otay Water District



Before turf replacement

# Landscape Incentives – Turf Replacement

- \$3.50 / square foot combined
  - \$2.00 BeWaterwise.com
  - \$1.50 Wastenowater.org (City of San Diego)
- OR
- \$1.50 Turfreplacement.watersmart sd.



# Landscape Incentives – Turf Replacement

- City of SD Requirements:
- Evidence of existing grass with irrigation
- Site visit prior to removal
- Replace with permeable landscape
- Mature Plants must cover at least 50% of the area



# Landscape Incentives – Additional Resources

- [Watersmartsd.org](http://Watersmartsd.org)
  - California Friendly Landscape Class (3hr)
  - WaterSmart Makeover Workshop 4 classes
- Miramar Greenery supplies mulch at a reasonable cost
- Water Conservation Garden Demonstration garden
  - [thegarden .org](http://thegarden.org)
- Watering Calculator    [wastenowater.org](http://wastenowater.org)

# HOA Greenbelt – Before



# HOA Greenbelt – After





A BETTER WAY TO BEAUTIFUL

**Carlos Michelin**  
Principal Water Resources Specialist  
San Diego County Water Authority  
(858) 522-6756  
[cmichelon@sdcwa.org](mailto:cmichelon@sdcwa.org)