

2016 Statewide Drought and Water Update



Statewide Update

some things stays the same

- SWRCB-State Water Board EO B-37-16
 - No hosing off sidewalks, driveways, etc.
 - No car washing without shut off nozzle
 - No lawn watering after measurable rain
 - No watering turf in street medians
 - No irrigation runoff
 - Water in restaurants by request
 - HOA prohibitions remain



HOA prohibitions remain in place

- AB 2100- set aside HOA rules that prohibit low water plants, conservation efforts, including reducing plant watering
- AB 2104-set aside HOA rules that prohibit turf conversion projects





Statewide Update changes

- Rollback overall 25% cuts (now local control)
- “Stress test” local suppliers must act now to ensure three year supply under drought conditions
- Based on local conditions
- Suppliers must self-certify that they can conserve if needed to meet demand
- **Reductions now based on projected shortfalls**

Contact local agency for support

- Education and Information
- Incentives
 - Rebates
 - Nozzles
 - Controllers
- Water audits and surveys
- Water budgeting help
- Demonstration gardens



Updates to the Model Water Efficient Landscape Ordinance MWEL

- 500 Square foot threshold
- 0.55 ETAF for residential
 - Allows for up to 25% turf or other high water use plants
- 0.45 ETAF for non-residential
 - No **ornamental** turf is realistic
 - Functional turf as an SLA-Special Landscape Area is allowed at 1.0 ETAF
 - Sports fields, parks
 - Event lawns at hotels



Local and regional MWELO

- Check with City or County for local regulations
- Orange County has a regional Ordinance adopted by MWDOC
- Cities may use that or a variation on the state MWELO
- Check with local planning department



Sustainability and the new Purpose of the Ordinance

- MWELO goes beyond water conservation
- Addressing water issues and other resource issues too
- Acknowledging California's climate (dry summer)
- Drought survival, protect the investment of landscapes

Landscape Design Plan

- Add compost (till in or leave on surface to protect tree roots)
- Friable (workable soil deep enough for plant growth)
- 3" mulch
- Show any rainwater capture features (if any)
- Show any gray water system components (if any)



Irrigation Plan

- Pressure regulation
- Master Valves and Flow Sensing
- Equipment must meet a national testing standard
- Sub-metering for better water management



Grading Plan

- No changes
- Can perform some grading work
- See Permitted Practice chart from Dept. Consumer Affairs





Graywater

- Ch. CA 16 plumbing code
- Laundry to Landscape –no permit if conditions are met
- Talk to local building dept. first
- Use care with soaps and detergents
- Not required in any landscape, but legal to install



Landscape Stakeholder Committee

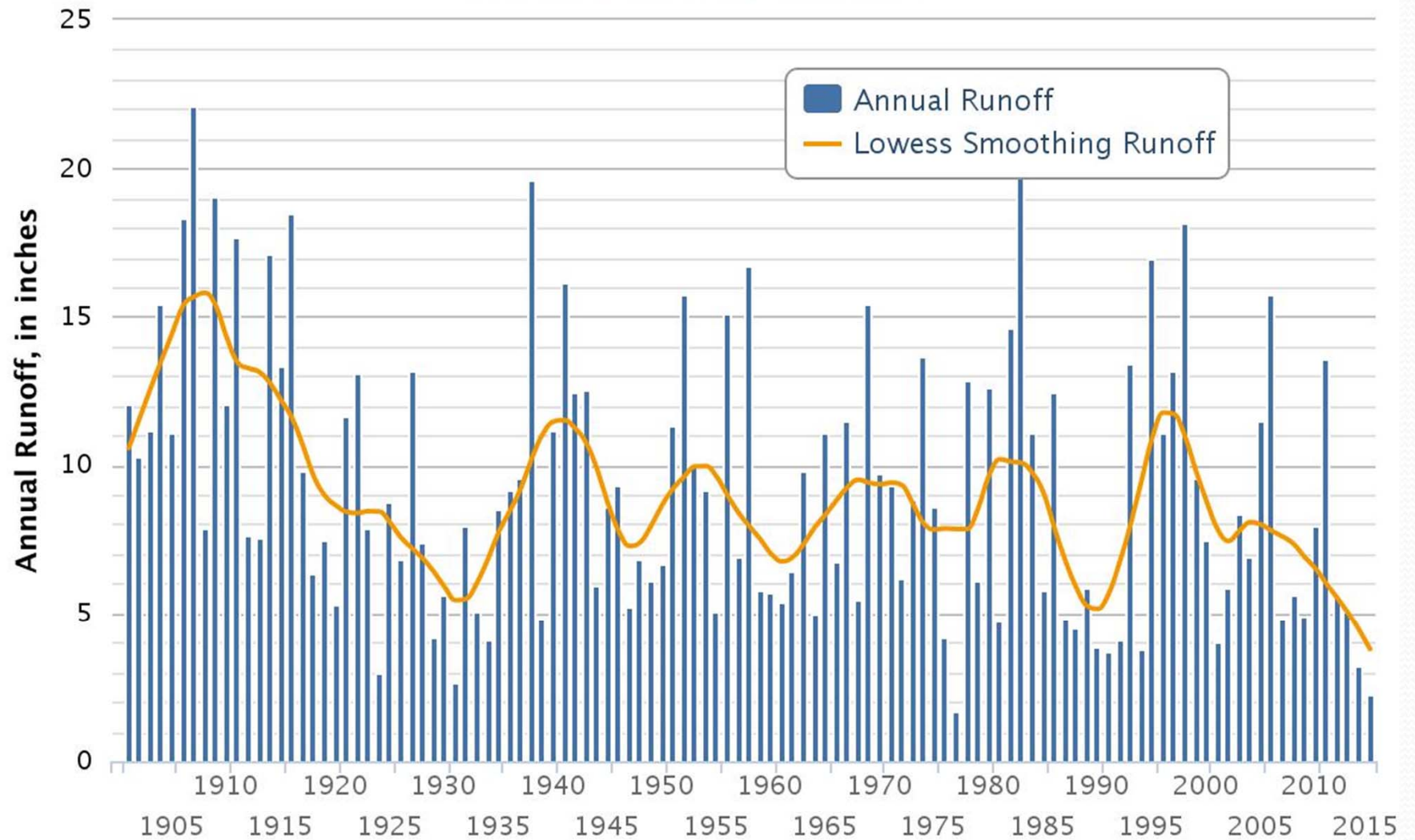
- DWR will be inviting expert volunteers in all aspects of landscape industry, and city/county government, water suppliers
- Focus will be on 20+ topic areas in the MWELO
- Objective to find solutions to make the MWELO more effective and **easier to comply with**
- Align timing with Cal Green Building code updates

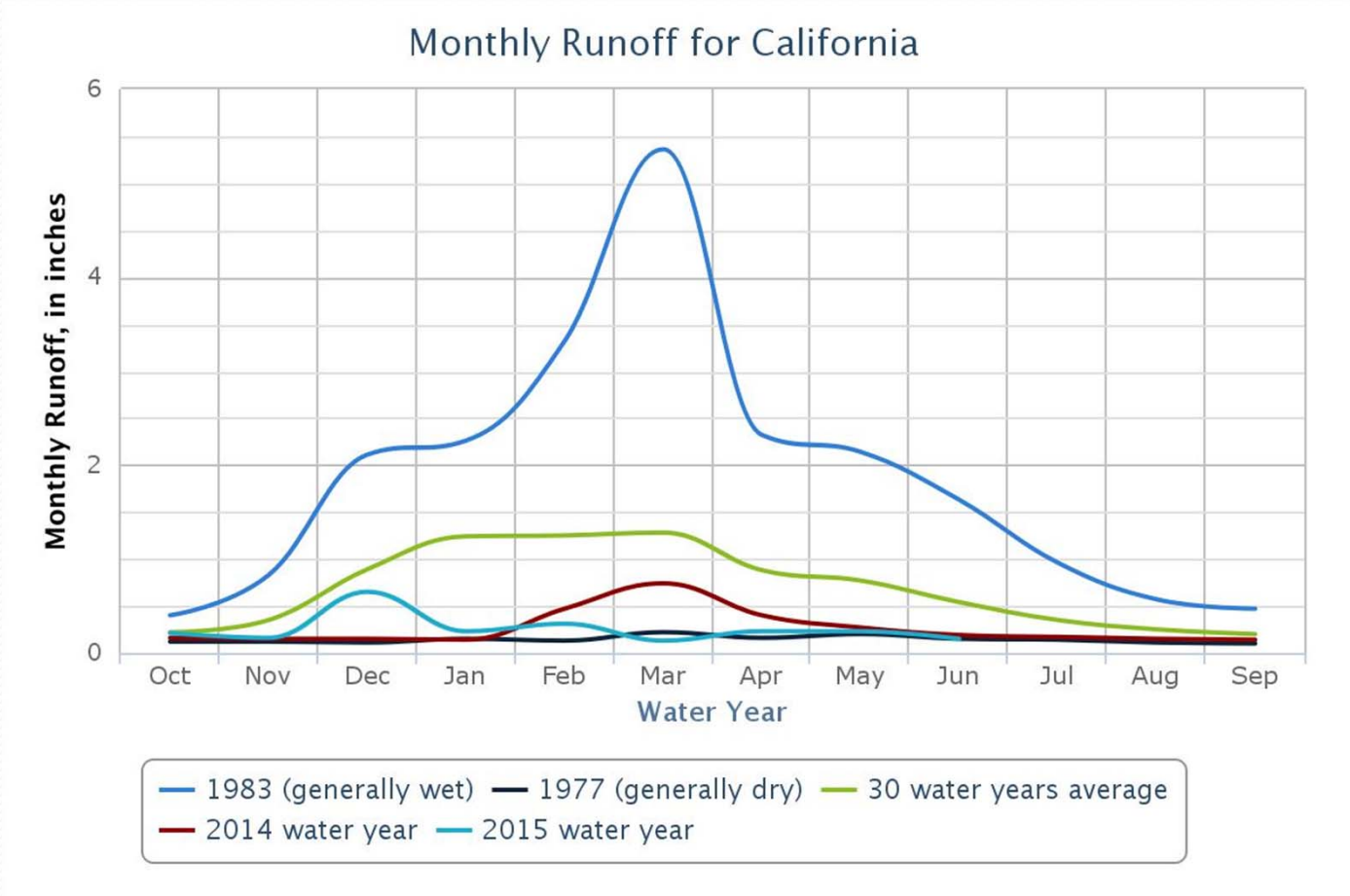


LSC-

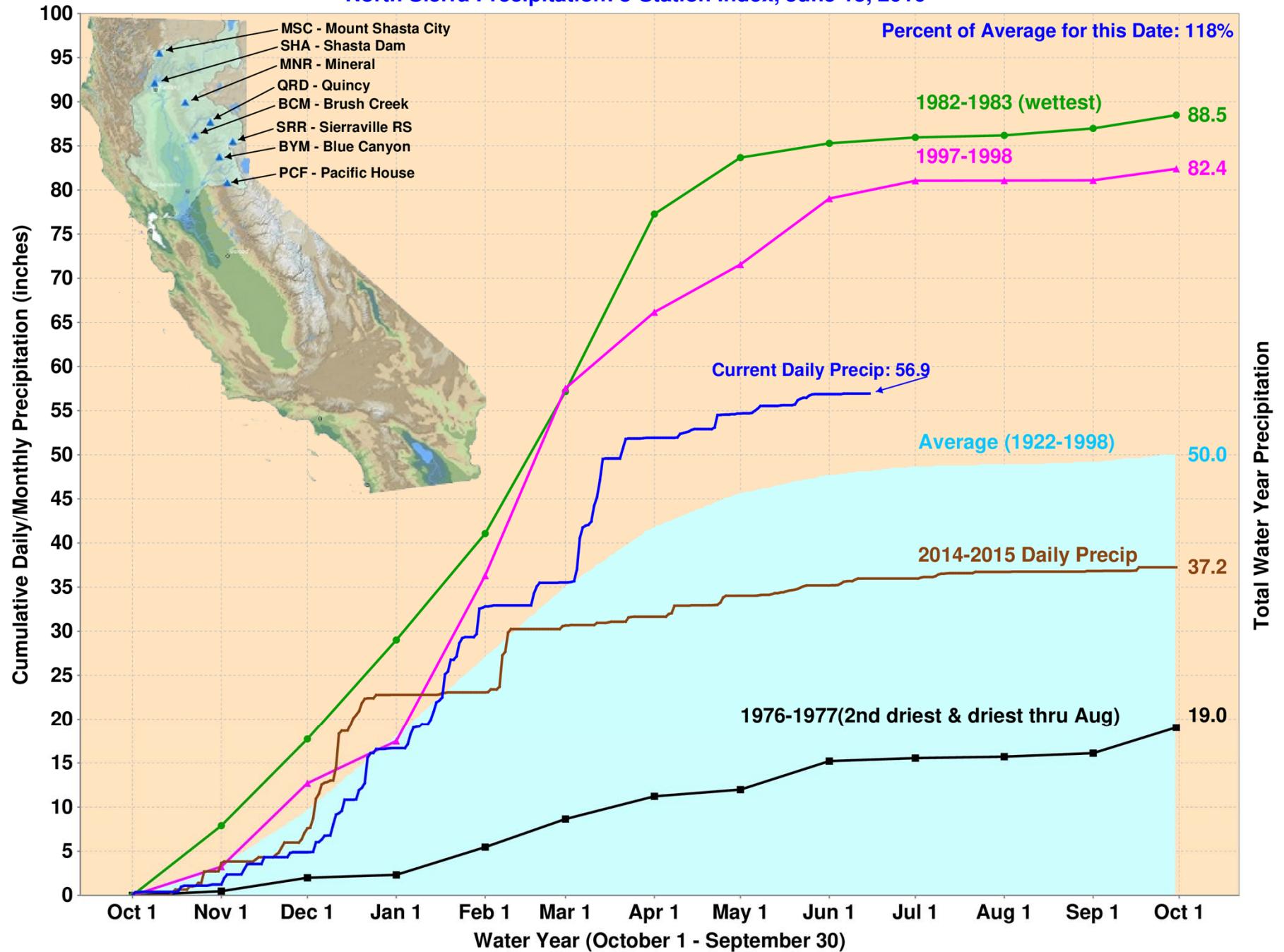
- Contact Julie if you want to be part
- About 25 main committee members and others for special side groups (unlimited interested parties)
- landscape@water.ca.gov
- Julie.Saare-Edmonds@water.ca.gov

Annual California Runoff

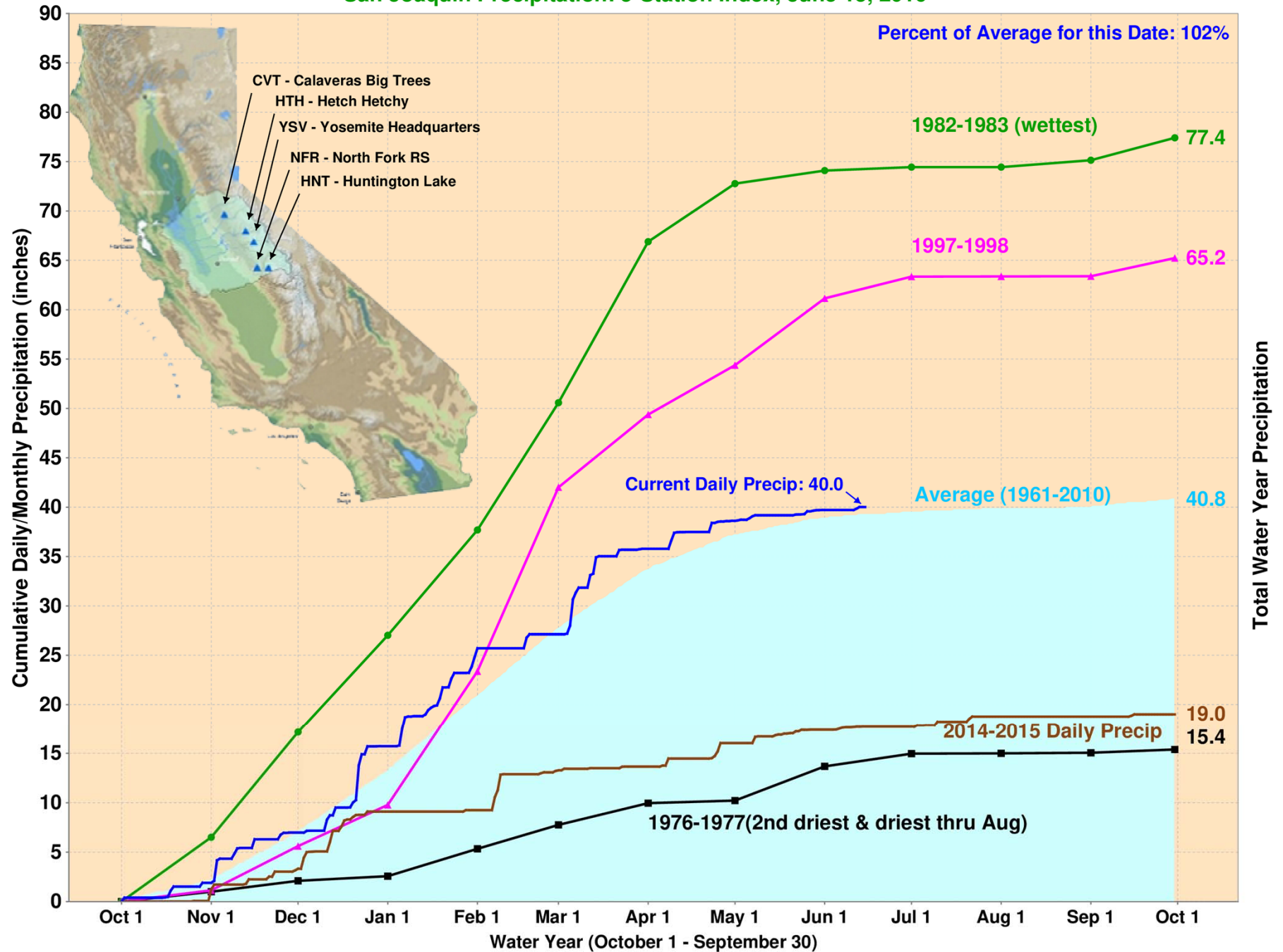




North Sierra Precipitation: 8-Station Index, June 15, 2016



San Joaquin Precipitation: 5-Station Index, June 15, 2016

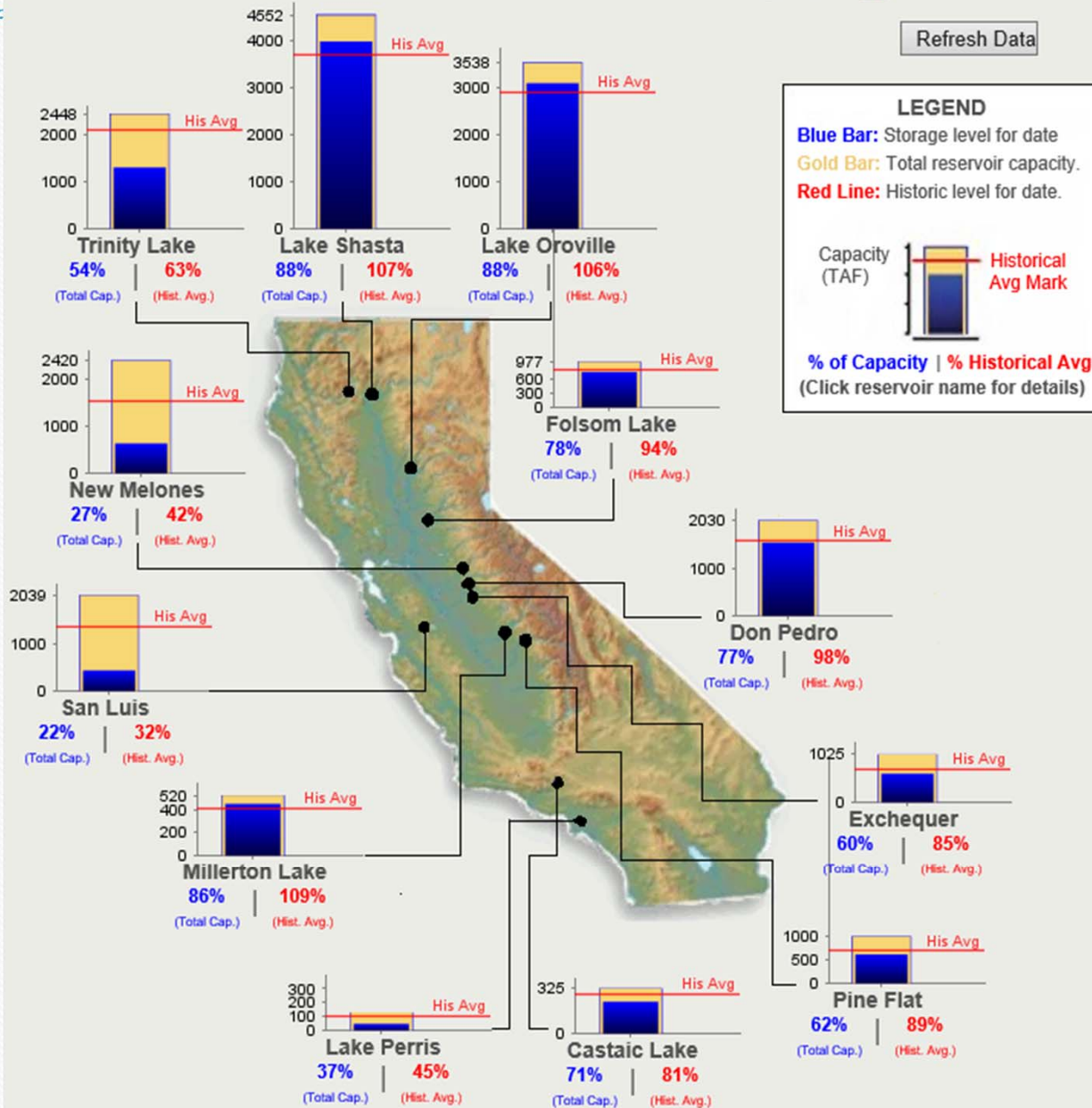


CONDITIONS FOR MAJOR RESERVOIRS: 21-JUN-2016

Data as of Midnight: 21-Jun-2016

Change Date: 21-Jun-2016

[Refresh Data](#)



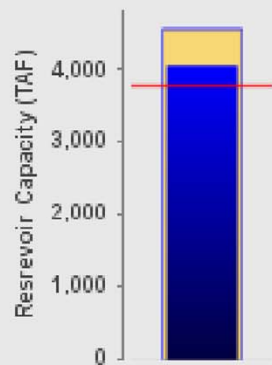


Reservoir Conditions - Shasta Reservoir



Lake Shasta Conditions

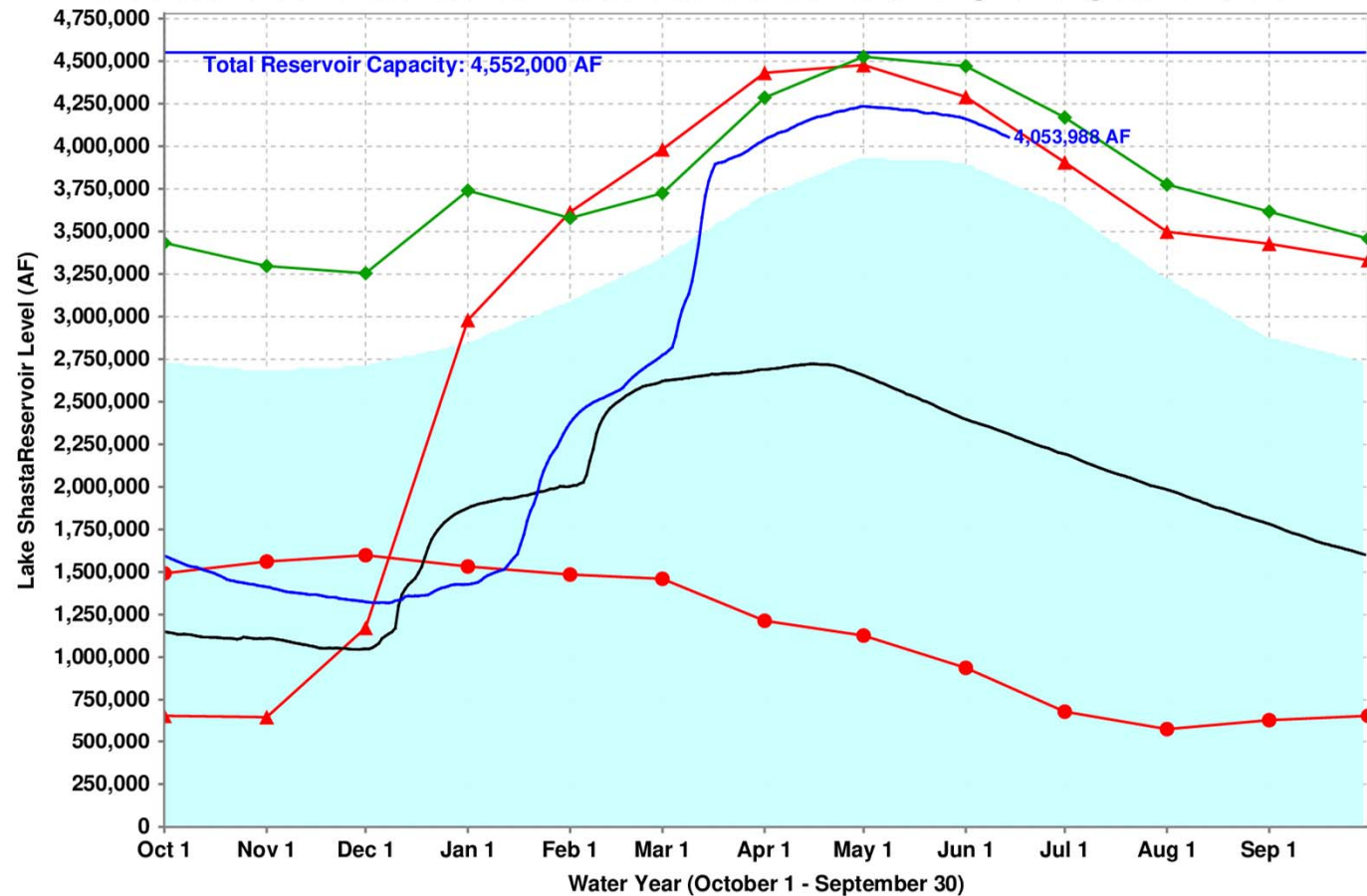
(as of Midnight - June 14, 2016)



Current Level: 4,053,988 AF

89% (Total Capacity) | 107% (Historical Avg.)

Lake Shasta Levels: Various Past Water Years and Current Water Year, Ending At Midnight June 14, 2016



Historical Average Total Reservoir Capacity 1976-1977 (Driest) 1977-1978 1982-1983 (Wettest) 2014-2015
Current: 2015-2016

Data Updated 06/15/2016 08:46 AM

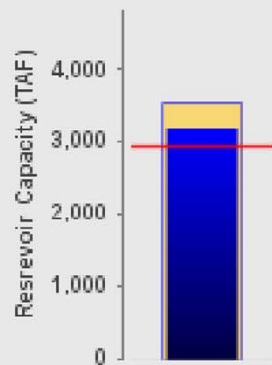


Reservoir Conditions - Lake Oroville



Lake Oroville Conditions

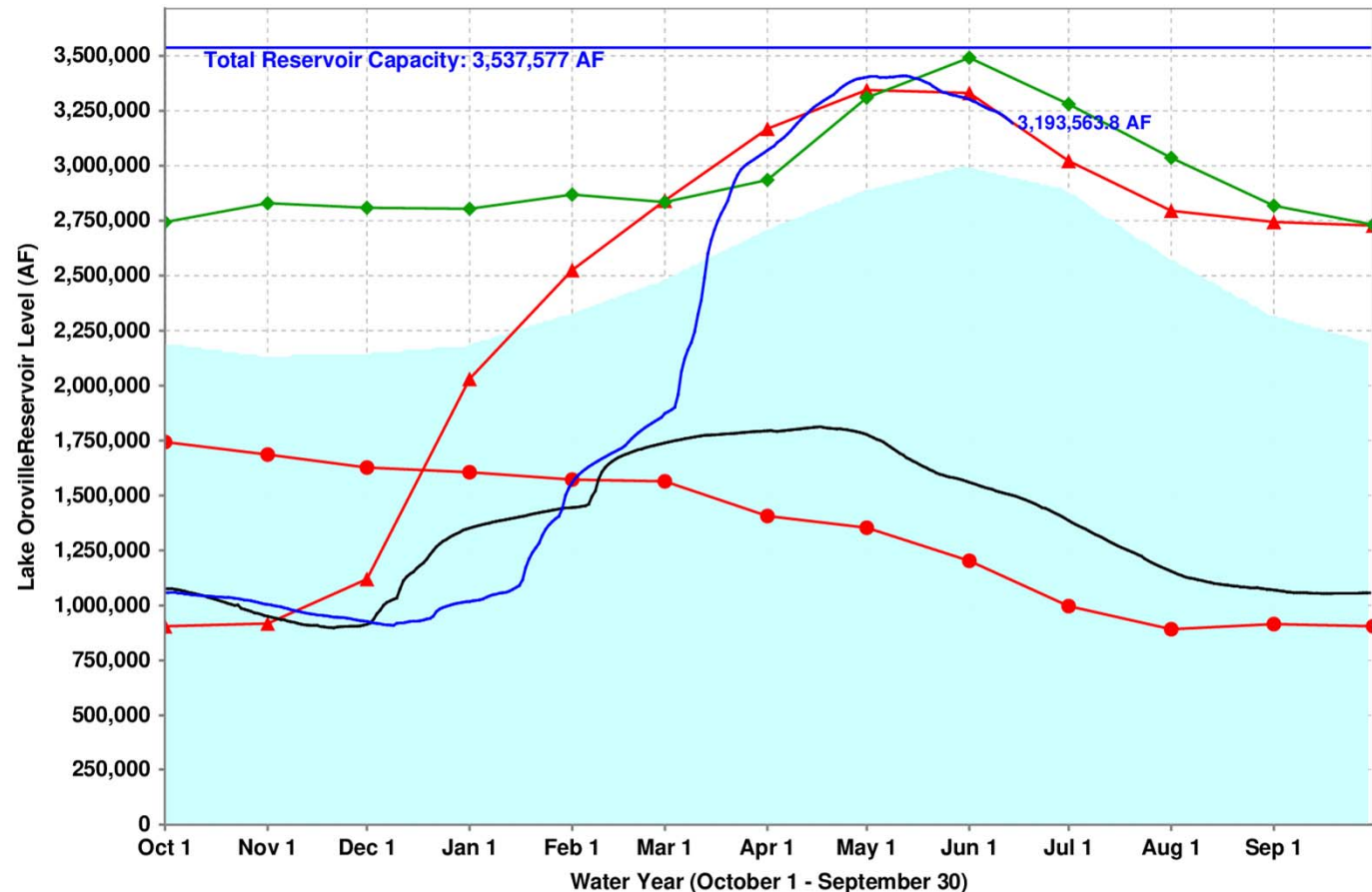
(as of Midnight - June 14, 2016)



Current Level: 3,193,563.8 AF

90% (Total Capacity) | 109% (Historical Avg.)

Lake Oroville Levels: Various Past Water Years and Current Water Year, Ending At Midnight June 14, 2016



Historical Average Total Reservoir Capacity 1976-1977 (Driest) 1977-1978 1982-1983 (Wettest) 2014-2015
Current: 2015-2016

Data Updated 06/15/2016 08:45 AM



Julie Saare-Edmonds

California Department of Water Resources
Landscape Program

Julie.saare-edmonds@water.ca.gov

